



Strong Brands Build Strong Business

Martin Yale Industries has been providing quality products to the office, graphics, industrial and school channels for over 60 years. Our rich heritage centers around some of the most recognized brands in the industry; intimus®, Martin Yale®, Master Products® and the brand best know simply for it's color, the "green board" - Premier®. This impressive line-up guarantees that customers will find the right product for their application.

intimus®

The intimus brand, best known for industry leading shredders, also includes folding machines, cutting equipment, business card slitters and letter openers under its banner. These machines are intended for the professional user who needs durable, accurate, heavy-duty machines. If you are serious about the work you produce you need the "serious performance" of intimus.

MARTIN YALE®

Walk into almost any office today and you will not have a hard time finding the Martin Yale brand of mailroom equipment, finishing equipment, folding machines, or shredders. Martin Yale machines are synonymous with reliability, innovation and improved productivity. If improving efficiency and productivity is important to you and your business look to Martin Yale for your answer - "designed to perform".

Premier®
A MARTIN YALE BRAND

Long the most recognized paper trimmer in the world, Premier continues to lead the pack with style and innovation. Built on our history of trademarked "green board™" guillotine trimmers, to our safety conscious rotary trimmers, to our high volume StakCut™ trimmers, no one comes close to our reputation and performance. Premier, the market leader delivering quality, tradition and value.

MASTER®
A MARTIN YALE BRAND

It seems like Master has been making paper punches forever, but when you have the reputation for the "Toughest Punch" in the business your product becomes timeless. Durable, heavy-duty paper punches are what we produce everyday. A variety of offerings from innovative electric punches all the way up to our 100-sheet Mega punch; when it comes to putting holes in paper we have the answer - Master, the toughest punch in the business.

At Martin Yale Industries we will continue to invest in our brands to bring innovation and quality products to market. Through this focus we will bring value to our customers document processing and handling solutions needs.



intimus®

MARTIN YALE®

Premier®
A MARTIN YALE BRAND

MASTER®
A MARTIN YALE BRAND

Mead-Hatcher
A MARTIN YALE BRAND



See what we can do for you.

Table of Contents

Document Shredders

Shredder Reference Guide	pg. 3
At The Desk Shredders	pg. 4-5
In The Office Shredders	pg. 6-7
In The Department Shredders	pg. 8-9
Industrial Shredders	pg. 9-10
Specialty Shredders	pg. 11

Folding Machines

Desktop Folding Machines	pg. 12-13
Tabletop Folding Machines	pg. 14-16

Paper Trimmers/Cutters

Rotary Paper Trimmers	pg. 17
Guillotine Paper Trimmers	pg. 18-19
Commercial Paper Cutters	pg. 20-21

Mailroom Equipment

Moisteners & Stamp Affixers	pg. 22
Tabbers & Labelers	pg. 22
Letter Openers	pg. 23-24

Finishing Equipment

Business Card Slitters	pg. 25-26
Collators	pg. 27
StackWagons™	pg. 27
Padding Presses	pg. 28
Paper Drills	pg. 28
Paper Joggers	pg. 29
Document Signers	pg. 29
Bursters	pg. 30
Score & Perf Machines	pg. 30

Paper Punches

Desktop Paper Punches	pg. 31-36
-----------------------	-----------

Document Management

MasterView™	pg. 37-39
Catalog Racks	pg. 39-42
Rack Accessories	pg. 40
Posting Trays	pg. 43

Ergonomic Computer Accessories

Articulating Keyboard Drawers	pg. 44-45
Corner Keyboard Drawers	pg. 46
Desktop Keyboard Managers	pg. 47
Footrest and Comparison Chart	pg. 48
Monitor Stands	pg. 49
CPU Management	pg. 50
Printer Stands	pg. 51

Mead-Hatcher Continuous Form Printer Stands

- For use with all styles of 80 column or 132 desktop printers
- Convenient forms slot to accommodate bottom feed printers
- Stores a stack of forms under stand
- Heavy-gauge, static dissipating steel construction

MODEL	APPLICATION	FORMS SLOT	DIMENSIONS	WEIGHT
24080	80 Column	11" w X 2 3/8" d	15" w X 14" d X 4" h	6.5 lbs.



Printer Stands



Mead-Hatcher Mobile Printer Stands

- Frees up valuable desktop space by storing the printer, paper, etc. under the desk or workstation
- Accepts most sizes of laser and inkjet printers, up to 18" w X 18" d
- Heavy-duty casters allow the entire unit to pull out to give easy access to the cable connections
- 2 built-in power strip holders in lower shelf of the unit, giving a convenient and usable outlet (power strips not included)
- Includes cable management slots
- Heavy-gauge, static-dissipating steel construction that holds a printer up to 75 lbs.

MODEL	APPLICATION	DIMENSIONS	WEIGHT
24050	1-shelf	22" w X 21 5/8" d X 8 1/2" h	16 lbs.
24060	2-shelf	22" w X 21 5/8" d X 17 1/8" h	20 lbs.

Mead-Hatcher Mobile Printer / CPU Stand

- One stand that holds both your printer and CPU
- Stores under the desk, freeing up valuable desktop space
- Accepts most sizes of laser and inkjet printers, up to 18" w X 18" d
- Also accepts most sizes of CPUs, up to 8" wide, CPU fits on adjustable side shelf
- The casters allow the unit to pull out and give easy access to the cable connections or stored materials
- Has 2 built-in power strip holders on the lower shelf of the unit, giving a convenient and usable outlet (power strips not included)
- Includes cable management slots and storage shelves for paper and other supplies
- Made with heavy-gauge, static-dissipating steel that can support up to 75 lbs.

MODEL	APPLICATION	DIMENSIONS	WEIGHT
24070	2-shelf/CPU	22" w X 21 5/8" d X 17 5/8" h	26 lbs.



Mead-Hatcher Mobile CPU Floor Stand



- For easy movement and convenience
- Equipped with four lockable swivel casters
- Protects air intake from carpet dust
- Positions CD and diskette slots at easy to reach height
- Elevates CPU 6" above the floor
- Vertical supports adjust in width from 11 1/8" to 9 1/8" to accommodate most PC systems
- Heavy-gauge, static-dissipating steel construction

MODEL	ELEVATION	DIMENSIONS	WEIGHT
26143	6"	9 1/2" w X 10 5/8" d X 14" h	9.6 lbs.

Mead-Hatcher Mountable CPU Holder

- Saves valuable desktop or floor space
- Vertically or horizontally mounts CPU to underside of desktop
- Keeps CPU at comfortable height to access disk drive
- Horizontal setup: width adjusts 13.1" to 25.7" height adjusts 5.3" to 10"
- Vertical setup: width adjusts 5.25" to 9.8" height adjusts 13.1" to 17.9"
- Durable steel construction firmly supports up to 85 lbs.



MODEL	APPLICATION	COLOR	DIMENSIONS	WEIGHT
26155	Fixed Mount	Black	7 1/4" w X 14 3/4" d X 2 1/2" h	4.8 lbs.

Mead-Hatcher Swivel-Mount CPU Holder



- Mounts CPU vertically or horizontally to underside of workstation
- Saves valuable desktop or floor space
- Keeps CPU at comfortable height to access CD and disk drive
- Unit pulls out on Teflon glides and offers 360° swivel for easy accessibility to connections
- Horizontal setup: width adjusts 15" to 20.8" height adjusts 5" to 7.8"
- Vertical setup: width adjusts 5.25" to 9.8" height adjusts 12.8" to 19.5"
- Durable steel construction firmly supports up to 85 lbs.

MODEL	APPLICATION	COLOR	DIMENSIONS	WEIGHT
26158	Swivel Mount	Black	12 3/8" w X 22 1/4" d X 3" h	16.1 lbs.

What's Important When Buying A Shredder...

- Frequency of use - how many people?
- Is capacity/speed important for my application?
- Will feed opening width accommodate the material being shredded?
- What level of security is required?
- If shredding large volume, will a large waste bin be needed?

At The Desk

Model	155	280	302	302CC	1000	2000	3000	5000
	155CC	280CC	Models	Models	1000CC	2000CC	3000CC	5000CC
Shred Size (inches)	5/32	1/4	1/4	1/8x1	5/32	5/32	5/32	5/32
	5/32x1 3/32	1/8x1 1/8	1/8	1/16x9/16	5/32x1 7/8	5/32x1 7/8	5/32x1 5/8	1/8x1 5/8
Capacity (sheets)	10-12	16-20	22-25	13-16	10	15	21	25
(16-24 lb. bond)	6-8	9-11	16-19	8-10	8	10	15	21
Speed (ft./min.)	10	24	20	20	14	14	10	10
Opening (in.)	9	9 1/4	9 1/2	9 1/2	9	9	9	9
Waste Cap. (gal.)	7	9	9.35	9.35	5.8	8.5	11.1	18
Weight (lbs.)	15.5	33	40	44/42	22	33.1	35/36	92.6

In The Office

Model	402	402CC	402HS	502	502CC	452
	Models	Models	Models	Models	Models	Models
Shred Size (inches)	1/4	1/8x1	1/32x7/16	1/4	5/32x1 13/32	1/8
	1/8	1/16x9/16		1/8	1/16x9/16	
Capacity (sheets)	22-25	13-16	5-6	27-33	18-20	15-19
(16-24 lb. bond)	16-19	8-10		19-25	12-15	
Speed (ft./min.)	20	20	20	30	30/20	60
Opening (in.)	9 1/2	9 1/2	9 1/2	10 1/4	10 1/4	16
Waste Cap. (gal.)	11	11	11	19	19	30
Weight (lbs.)	43	46	46	90	90	121

Model	452CC	602	602	602CC	602HS	385se
	Models	Models	Highspeed	Models	Models	Models
Shred Size (inches)	1/16x5/8	1/4	1/4	5/32x1 13/32	1/32x7/16	1/4
		1/8		1/16x5/8		
Capacity (sheets)	11-15	30-36	22-29	20-22	7-10	14-20
(16-24 lb. bond)		18-25		12-16		
Speed (ft./min.)	30	30	60	30	27.5	45
Opening (in.)	16	16	16	16	16	15
Waste Cap. (gal.)	30	34	34	34	34	40
Weight (lbs.)	121	132	132	132	132	38

In The Department

Model	702	702CC	0077sx	S407	802CC	852CC
						w/ hopper
Shred Size (inches)	1/4	5/32x1 13/16	1/32x1/2	1/4	1/16x9/16	1/8x1 1/2
Capacity (sheets / 16-24 lb. bond)	65-70	50-55	17-22	40-50	35-40	70-80
Speed (ft./min.)	24	20	30	60	60	47
Opening (in.)	16	16	16	16	17	17
Waste Cap. (gal.)	46	46	32	47	54	54
Weight (lbs.)	198	198	236	192	408	419



Martin Yale® 5000 series

- Shreds paper, CDs, credit cards, access entry cards, IDs, and floppy disks with either strip-cut or cross-cut models
- Handles paper clips and staples
- On/Off control via light barrier
- Separate safety slot for credit cards and CD shredding
- Dustproof waste basket enclosed in a solid wood cabinet
- Easy emptying by pulling out the waste basket
- Stores and moves easily on 4 locking casters
- LED for "Stand-by", "Paper Jam", "Overheat", receptacle "Removed or Full"
- Push button for forward and reverse

MODEL	SHRED CAPACITY	SHRED SIZE	CUT TYPE	WEIGHT
5000	25-26	5/32"	Strip-Cut	89 lbs.
5000CC	19-22	1/8" X 1 5/8"	Cross-Cut	89 lbs.

Martin Yale® 3000 series

- Shreds paper, CDs and credit cards with either strip-cut or cross-cut models
- Handles paper clips and staples
- On/Off control via light barrier
- Separate safety slot for credit cards and CD shredding
- Dustproof enclosed waste basket with window
- Easy emptying by pulling out the waste basket
- Stores and moves easily on 4 locking casters
- Shreds paper as well as CDs with Strip-cut and Cross-cut models
- Push button for forward and reverse

MODEL	SHRED CAPACITY	SHRED SIZE	CUT TYPE	WEIGHT
3000	21	5/32"	Strip-Cut	35 lbs.
3000CC	15	5/32" X 1 5/8"	Cross-Cut	36 lbs.

Martin Yale® 2000 series

- Shreds paper, CDs and credit cards with either strip-cut or cross-cut models
- Handles paper clips and staples
- On/Off control via light barrier
- Separate safety slot for credit cards and CD shredding
- Dustproof enclosed waste basket with window
- Easy emptying by pulling out the waste basket
- Stores and moves easily on 4 locking casters
- LED for "Stand-by", "Paper Jam", and "Motor Overheat"

MODEL	SHRED CAPACITY	SHRED SIZE	CUT TYPE	WEIGHT
2000	15	5/32"	Strip-Cut	33.1 lbs.
2000CC	10	5/32" X 1 7/8"	Cross-Cut	33.1 lbs.

Martin Yale® 1000 series

- Shreds paper and credit cards
- Handles paper clips and staples
- On/Off control via light barrier
- Separate safety slot for credit card shredding
- Dustproof enclosed waste basket with window
- Easy emptying by pulling out the waste basket
- Stores and moves easily on 4 locking casters
- LED for "Stand-by", "Paper Jam", and "Motor Overheat"

MODEL	SHRED CAPACITY	SHRED SIZE	CUT TYPE	WEIGHT
1000	10	5/32"	Strip-Cut	22 lbs.
1000CC	8	5/32" X 1 7/8"	Cross-Cut	22 lbs.

Mead-Hatcher PC Bridge™

- Helps to free up desk space by providing a storage area of the mouse and keyboard when not in use
- Easily supports a 50 lb. monitor and elevates it 3³/₄" to a more comfortable viewing position
- Rear access ports provide cable management
- Backstop prevents keyboard from sliding out the wrong side
- Heavy-gauge, static-dissipating steel construction

MODEL	COLOR	DIMENSIONS	WEIGHT
22310	Pearl Gray	23 ³ / ₈ "w X 10 ¹ / ₈ "d X 3 ³ / ₈ "h	6.6 lbs.



Mead-Hatcher Monitor Stand with Copyholder

- Features an oversized in-line copyholder to help reduce visual, head and neck fatigue
- Easily supports a 40 lb. monitor and elevates it 6" to a more comfortable viewing position
- Copyholder holds two sheets at a time, slides under stand when not in use
- Magnetic sight bar holds document in place
- Can be used in conjunction with Model 21202 to achieve desired height
- Heavy-gauge, static-dissipating steel construction

MODEL	COLOR	DIMENSIONS	WEIGHT
21318	Pearl Gray	18"w X 13 ¹ / ₄ "d X 6"h	14 lbs.

Mead-Hatcher Stackable Monitor Riser

- Stackable to achieve a more comfortable viewing height
- Easily supports a 75 lb. monitor
- Area underneath stand provides convenient storage space
- Can be used in conjunction with Model 21318 to achieve desired height
- Heavy-gauge, static-dissipating steel construction

MODEL	COLOR	DIMENSIONS	WEIGHT
21202	Pearl Gray	11 ⁷ / ₈ "w X 11 ⁷ / ₈ "d X 2"h	5 lbs.



Keyboard Management Features Comparison Chart

MODEL	STANDARD MOUNT	CORNER MOUNT	DUAL SWIVEL	SIT-STAND	HEIGHT ADJUST	TILT RANGE	SWIVEL RANGE	MOUSE AREA	WRIST PAD	COLOR
Under-Desk Plastic Platform										
28300	X		X		6"	25°	360°	X	X	Black
28200	X		X		6"	25°	360°	X		Black
28250	X	X			6"	25°	360°	X		Black
Under-Desk Wood Platform										
KA150	X				7"	30°	360°	X	X	Black
Under-Desk Steel Platform										
21885	X								X	Pearl Gray
21028	X							X	X	Pearl Gray
22030	X				21/4"	15°		X	X	Pearl Gray
32030	X				21/4"	15°		X	X	Black
28828	X				6"	30°	360°	X	X	Black
Under-Desk Phenolic Platform										
28962	X	X			6"	30°	360°	X	X	Black
28866	X	X			8"	30°	360°	X	X	Black
28975	X	X		X	12"	30°	360°	X	X	Black
42020		X			6"			X	X	Black
Desk-Top Drawers Steel Platform										
22040	X							X	X	Pearl Gray
Desk-Top Monitor Stand/Keyboard Covey										
22310-Steel	X	X						X	X	Pearl Gray
21318-Steel w/copyholder	X	X							X	Pearl Gray
Mouse Drawer										
24812	X							8 1/4"	X	Pearl Gray



Mead-Hatcher Ergonomic Footrest

- Helps improve posture and reduce lower back strain
- Heavy-gauge, static-dissipating steel construction

MODEL	COLOR	DIMENSIONS	WEIGHT
24016	Pearl Gray	16" w X 11" d X 3 3/8" h	4.6 lbs.

intimus® 155 The Elegant Compact Shredders

- Automatic on/off control via light barrier
- Auto-stop and reverse button when overloaded
- Has a convenient opening for general paper waste
- The cutters are made of solid, hardened steel
- Available in both strip-cut and cross-cut models

MODEL	SHRED		CUT TYPE	WEIGHT
	CAPACITY	SIZE		
155	10-12	5/32"	Strip-Cut	15.5 lbs.
155CC	6-8	5/32" X 1 3/32"	Cross-Cut	15.5 lbs.



intimus® 280 Efficient - Personal Shredders

- Automatic on/off control via light barrier
- Auto-stop and reverse button when overloaded
- "Ready" indicator light
- LEDs indicators for paper jam, bin full, door open or catch basket removed
- Has a convenient opening for general paper waste
- Continuous running motor - no downtime
- Cutters are made of solid, hardened steel

MODEL	SHRED		CUT TYPE	WEIGHT
	CAPACITY	SIZE		
280	16-20	1/4"	Strip-Cut	33 lbs.
280CC	9-11	1/8" X 1 1/8"	Cross-Cut	33 lbs.

intimus® 302 Whispering Shredders

- Automatic on/off control via light barrier
- Auto-stop and reverse button when overloaded
- "Ready" indicator light
- LEDs indicators for paper jam, bin full, door open or catch basket removed
- Has a convenient opening for general paper waste
- Continuous running motor - no downtime
- Cutters are made of solid, hardened steel

MODEL	SHRED		CUT TYPE	WEIGHT
	CAPACITY	SIZE		
302	22-25	1/4"	Strip-Cut	40 lbs.
302CC	13-16	1/8" X 1"	Cross-Cut	44 lbs.
302	16-19	1/8"	Strip-Cut	40 lbs.
302CC	8-10	1/16" X 9/16"	Cross-Cut	44 lbs.





Console

intimus® 402 Contemporary Design, Whisper Quiet Operation

- Electronic system with microprocessor control
- Full bag, paper jam and door open indicators
- Extremely quiet operation
- Front loading paper feed
- Automatic start/stop
- Continuous running motor
- 9 1/2" opening to accommodate any business document
- Also available in a console version with shelf for paper storage
- 4 locking casters for easy mobility

MODEL	SHRED CAPACITY	SHRED SIZE	CUT TYPE	WEIGHT
402	22-25	1/4"	Strip-Cut	43 lbs.
402CC	13-16	1/8" X 1"	Cross-Cut	46 lbs.
402	16-19	1/8"	Strip-Cut	43 lbs.
402CC	8-10	1/16" X 9/16"	Cross-Cut	46 lbs.
CONSOLE				
402	22-25	1/4"	Strip-Cut	83 lbs.
402CC	13-16	1/8" X 1"	Cross-Cut	85 lbs.

intimus® 502 Large Capacity, High Security

- New contemporary design
- 10 1/4" working width
- Front loading paper feed
- Strip-cut and Cross-cut versions available
- Auto start/stop
- Full bag, paper jam and door open indicators
- Continuous running motor
- Cutters are made of solid, hardened steel

MODEL	SHRED CAPACITY	SHRED SIZE	CUT TYPE	WEIGHT
502	27-33	1/4"	Strip-Cut	90 lbs.
502CC	18-20	5/32" X 1 13/32"	Cross-Cut	90 lbs.
502	19-25	1/8"	Strip-Cut	90 lbs.
502CC	12-15	1/16" X 9/16"	Cross-Cut	90 lbs.



intimus® 452 Medium-Duty, Security Shredders

- 16" working width to shred computer print-outs
- Elegant, functionally styled design with a compact folding paper shelf
- Dust-free operation with large catch basket, totally mobile on casters
- Fully automatic operation, user-friendly with visual indicators
- Hardened steel cutting cylinders
- Continuous running motor

MODEL	SHRED CAPACITY	SHRED SIZE	CUT TYPE	WEIGHT
452	15-19	1/8"	Strip-Cut	121 lbs.
452CC	11-15	1/16" X 5/8"	Cross-Cut	121 lbs.



Mead-Hatcher Economy Steel Keyboard Drawer

- Drawer extends 11" and locks into keying position
- Smooth-glide ball bearing slides for easy drawer pullout
- Accepts stand-sized keyboards
- Includes padded wrist rest for additional comfort
- Heavy-gauge, static-dissipating steel construction
- Model 21028 is designed to accommodate mouse on right or left side of keyboard

MODEL	DESCRIPTION	COLOR	DIMENSIONS	WEIGHT
21885	Keyboard	Pearl Gray	25 9/16" w X 16 1/8" d X 3 1/8" h	8.8 lbs.
21028	Keyboard/Mouse	Pearl Gray	31 1/2" w X 16" d X 5" h	9.8 lbs.



21885

21028

Mead-Hatcher Steel Desktop Keyboard Drawer

- Supports a 75 lb. monitor and elevates it 3 3/4" to a more comfortable viewing height
- Drawer extends 11" and locks into keying position, stores under the stand when not in use
- Smooth-glide ball bearing slides for easy drawer pullout
- Includes padded wrist rest
- Made of heavy-gauge steel to eliminate the sagging associated with plastic drawers
- Designed to accommodate mouse on right or left side of keyboard

MODEL	DESCRIPTION	COLOR	DIMENSIONS	WEIGHT
22040	Keyboard/Mouse	Pearl Gray	31" w X 16 1/8" d X 3 3/4" h	23.2 lbs.



Mead-Hatcher Mouse Platform

- Ideal for use with keyboard drawers that don't have a mousing area
- Mounts adjacent to a drawer

MODEL	DIMENSIONS	WEIGHT
24812	8 1/4" w X 15 1/4" d X 3" h	3.5 lbs.





Mead-Hatcher Radius Style Keyboard Arm

- Turn a workstation corner into a usable keyboard and mousing area
- Mousing areas on the right or left sides
- Features a radius-style platform and a 23" slide to fit a variety of corner workstation applications
- Offers superior ergonomic adjustment capabilities to help achieve a more comfortable workspace
- Full-length padded wrist rest designed to increase mousing comfort
- To adjust height, just lift and move the tray
- Features an 8" height adjustment, 360° swivel and a 30° positive/negative tilt range
- Height and tilt adjustments work to help keep wrists straight during use
- Includes cable management slots for the mouse and keyboard
- Low profile design gives more leg room
- Durable 30" wide light-weight phenolic platform designed for mousing on the right or left side

MODEL	DESCRIPTION	TRACK LENGTH	PLATFORM	WEIGHT
28866	Standard	23"	30" w X 10 1/2" d	17 lbs.

Mead-Hatcher Lift-N-Loc™ Articulating Keyboard Arm

- To adjust height, just lift and move the tray
- Features a height adjustment, 360° swivel and a 30° positive/negative tilt range
- Height and tilt adjustments work in combination to help keep wrists straight while keying
- Low profile design gives more leg room
- Includes soft-touch padded wrist rest for keyboard and mouse
- Spacious wood platform accepts standard and ergonomic keyboards
- Mouse tray attaches on the right or left side



MODEL	DESCRIPTION	TRACK LENGTH	PLATFORM	WEIGHT
KA150	Standard Mount	21"	28" w X 12 1/2" d	17 lbs.

Mead-Hatcher Articulating Keyboard Arm

- Traditional articulating mechanism
- Height adjusts 6" (5" below to 1" above)
- Tilt adjusts 25° (15° forward to 10° reverse)
- Platform swivels 360°
- Slide out wood mouse platforms for right or left side
- High impact durable plastic keyboard platform is light-weight and durable

MODEL	DESCRIPTION	TRACK LENGTH	PLATFORM	WEIGHT
28250	Corner Mount	21"	20 3/4" w X 10 1/2" d	19.5 lbs.

intimus® 385

- 15" working width for standard EDP forms
- Self-adjusting torsion cutting system - no need to remove staples and paper clips
- Electronic eye located in the inlet guide ensures automatic on/off operation, reverse switch for paper jams; motor overloaded protection
- Built-in frame for large plastic bag; optional work stand on casters
- Designed for continuous-form feed

MODEL	SHRED CAPACITY	SHRED SIZE	CUT TYPE	WEIGHT
385	14-20	1/4"	Strip-Cut	38 lbs.



intimus® 602 Wide Mouth Shredder

- Elegant, functionally styled design with a compact, folding paper shelf
- Full 16" working width with a guide strip to ensure accurate feeding of continuous forms
- Dust-free operation with large catch basket and totally mobile on casters
- Fully automatic operation, user-friendly with visual indicators
- Hardened steel cutting cylinders
- Large 34 gallon capacity waste bin
- Continuous running motor

MODEL	SHRED CAPACITY	SHRED SIZE	CUT TYPE	WEIGHT
602	30-36	1/4"	Strip-Cut	132 lbs.
602CC	20-22	5/32" X 1 13/32"	Cross-Cut	132 lbs.
602	18-25	1/8"	Strip-Cut	132 lbs.
602CC	12-16	1/16" X 5/8"	Cross-Cut	132 lbs.

In The Department Shredders

intimus® 702 Document Shredders

- Automatic on/off via light barrier
- Manual on/off and jam detection
- Indicators for "Ready", "Bag Full", and "Paper Jam"
- On casters for complete mobility
- Quiet and dust-free operation
- Electronic system with microprocessor control
- Optional space-saving shelf. Large 46 gallon waste bin
- Shreds paper clips, CDs, DVDs and 3.5" floppy disks
- Hardened steel cutting cylinders
- Designed for continuous form feed
- Continuous running motor

MODEL	SHRED CAPACITY	SHRED SIZE	CUT TYPE	WEIGHT
702	65-70	1/4"	Strip-Cut	198 lbs.
702CC	50-55	5/32" X 1 13/16"	Cross-Cut	198 lbs.
702	40-45	1/8"	Strip-Cut	198 lbs.



* Requires 20amp service



Optional - stand and forms rack

intimus® S-407

- Wide 16" working width for EDP forms and oversized paper
- High capacity for large volume applications
- No need to remove staples or paper clips - with the unique self-adjusting torsion cutting system
- Key lock protected, chain driven and fully safety featured
- Optional mobile stand for absolute versatility
- Optional forms rack
- Continuous running motor

MODEL	SHRED CAPACITY	SHRED SIZE	CUT TYPE	WEIGHT
S407	50	1/4"	Strip-Cut	192 lbs.

intimus® 802CC

- Automatic on/off via light barrier
- Auto reverse when overloaded and reversed
- "Ready" indicator
- LEDs for paper jam, bin full and door open
- Dustproof enclosure - mounted on rollers for flexible use
- Large shelf, hinged to save space
- Telescopic sliding frame with changeable, environmentally acceptable PE-bag
- Cutters made of solid, hardened steel
- Designed for continuous form feed

MODEL	SHRED CAPACITY	SHRED SIZE	CUT TYPE	WEIGHT
802CC	35-40	1/16" X 9/16"	Cross-Cut	408 lbs.



intimus® 852CC

- Easy keyboard operation with rotary main switch
- Automatic reverse in case of paper jam
- Optical or audible fault indication
- Wide slot feed opening for flat paper
- Large hopper accepts entire bin full of documents
- Large capacity, fully enclosed dust-free mobile base with removable catch basket
- Continuous running motor
- Designed for continuous form feed

MODEL	SHRED CAPACITY	SHRED SIZE	CUT TYPE	WEIGHT
852CC	70-80	1/8" X 1 1/2"	Cross-Cut	419 lbs.



Mead-Hatcher EasyTouch™ Articulating Keyboard Arm

- EasyTouch™ paddle easily adjusts both height and angle
- 6" height adjustment / 30° angle adjustment
- Keyboard platform rotates 360°
- Sturdy steel keyboard and mouse platforms
- Padded keyboard wrist rest

MODEL	DESCRIPTION	TRACK LENGTH	PLATFORM	WEIGHT
28828	Standard Mount	17 3/4"	25" w X 10 3/4" d	16 lbs.



Mead-Hatcher Adjustable Keyboard Arms

- Traditional articulating mechanism
- Height adjusts 6" (5" below and 1" above)
- Tilt adjusts 25° (15° forward to 10° reverse)
- Platform swivels 360°
- Slide out mouse platforms slide out on right or left side
- High impact durable plastic keyboard platform with slide-out wood mouse platform
- Model 28300 comes with wrist rest

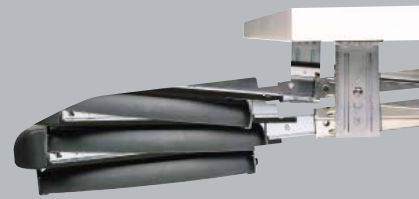
MODEL	DESCRIPTION	TRACK LENGTH	PLATFORM	WEIGHT
28200	Standard Mount	21"	20 3/4" w X 10 1/2" d	19.5 lbs.
28300	Standard Mount	21 3/4"	20 3/4" w X 10 1/2" d	24 lbs.

Mead-Hatcher Lift-N-Loc™ Articulating Keyboard Arm

- For corner or straight installations
- Simply lift and move the tray to adjust for height
- 30° angle adjustment and a 360° swivel
- Sturdy, lightweight phenolic keyboard platform
- Tilt/swivel mouse platform mounts to right or left
- Padded wrist rest for the keyboard
- Both sit and sit/stand versions available

MODEL	DESCRIPTION	TRACK LENGTH	PLATFORM	WEIGHT
28962	Standard Mount	21"	26 1/2" w X 12 1/2" d	20 lbs.
28975	Sit/Stand Mount	23"	26 1/2" w X 12 1/2" d	20 lbs.





Articulating

- Tray lifts or lowers 15° by adjusting the mounting screws



EasyTouch™ Articulating

- 6" height adjustment
- 30° angle adjustment
- Platform rotates 360°



Lift-N-Loc™

- Tray lifts or lowers 30° without levers or knobs
- Swivel capacity of 360°



Lift-N-Loc™ Sit or Stand

- Tray lifts or lowers 30° without levers or knobs
- Swivel capacity of 360°

intimus® 702SF - High Security

- Extremely small shreds for the ultimate in security
- Auto "On/Off" via light barrier
- Indicators for "Ready", "Bag Full" and "Paper Jam"
- Quiet and dust-free operation
- Electronic system with microprocessor
- Optional space saving shelf
- Hardened steel cutting cylinders
- On casters for easy mobility
- Continuous running motor
- Meets NSA/CSS standards

MODEL	SHRED CAPACITY	SHRED SIZE	CUT TYPE	WEIGHT
702SF	10-16	.8mm X 4.5mm	Cross-Cut	198 lbs.



* Requires 20amp service

PacMaster Shredders



intimus® PacMate™

- Allows the user to utilize empty corrugated boxes, newsprint and computer printouts (non-confidential) for their packing material needs
- Tabletop convenience makes it easy to move from location to location
- Convenient mobile stand with paper shelf included

MODEL	SHRED CAPACITY	SHRED SIZE	CUT TYPE	WEIGHT
PacMate	1	1/8" X 4 1/2"	Cross-Cut	84 lbs.

intimus® PacMaster™

- Converts empty corrugated boxes into "free" large-volume filler material
- Lockable main switch also acts as an emergency switch
- Rotary knob controls On/Off and reverse functions
- Built-in cutter to cut your boxes down to size
- 120 Volt series E (not pictured) also available
- Optional vacuum kit (sold separately)

MODEL	SHRED CAPACITY	SHRED SIZE	CUT TYPE	WEIGHT
PacMaster	2*	5/32" X 4 3/8"	Grid-Cut	452 lbs.

* 2 (3-ply boxes)



* 220V / 50Hz

Mead-Hatcher Plastic Keyboard Manager

- Drawer smoothly rolls out 13" and locks into position
- Smooth-glide ball-bearing slides for easy drawer pullout
- Accepts standard-sized keyboards
- Adjustable mounting brackets offer height adjustments
- Two cable management slots
- Has convenient compartment to store pens, pencils, etc.

MODEL	DESCRIPTION	TRACK LENGTH	PLATFORM	WEIGHT
76560	Charcoal, Plastic Drawer	13"	22"w X 10 3/4"d	5 lbs.



Mead-Hatcher Adjustable Steel Keyboard Drawer

- Features a 2 1/4" height adjustment and a 15° positive/negative tilt range for individual user comfort
- Drawer extends 11" and locks into keying position
- Smooth-glide ball bearing slides for easy drawer pullout
- Includes padded wrist rest
- Heavy-gauge, static-dissipating steel construction

MODEL	DESCRIPTION	COLOR	DIMENSIONS	WEIGHT
22030	Keyboard/Mouse	Pearl Gray	33 1/8" w X 16" d X 5" h	12 lbs.
32030	Keyboard/Mouse	Black	33 1/8" w X 16" d X 5" h	12 lbs.



NEW



Fits through standard doorways!

intimus® 14.95

- Conveyor belt feeding system
- Paddles move both smooth and crumpled paper easily
- Works with all standard continuous paper formats with working widths up to 17 inches
- Lockable On/Off safety control via rotary selector switch
- Separate main power switch for safety
- Alarm "Bin Full", with simultaneous automatic stop of shredding process
- All system functions are programmable logic controlled
- Generously sized feed table for controlled, manageable, safe and rapid loading
- Cutting mechanism with easy access for maintenance
- Rugged, wear-resistant cutting rollers made from high-grade steel for optimum cutting performance
- Swivel-out receptacle with 53 gallon waste bag
- Designed to fit through standard doorway fully assembled

MODEL	SHRED CAPACITY	SHRED SIZE	CUT TYPE	WEIGHT
698904	130-140	5.8mm	Strip-Cut	977 lbs.
698914	200-210	11.8mm	Strip-Cut	977 lbs.
698924	120-130	6mm X 50mm	Cross-Cut	977 lbs.

intimus® 16.50 Large Capacity

Wherever there is a need for shredding large quantities of expired / sensitive data, in strict compliance with data security practices, then it is more economical to do this at one "central" location. The extensive intimus® selection of large shredders perfectly combines the performance and security requirements, guaranteeing an investment with an excellent price / performance equation.

MODEL	SHRED CAPACITY	SHRED SIZE	CUT TYPE	WEIGHT
11.8	350-450	1/2"	Strip-Cut	1,600 lbs.
11.8CC	300-400	1/2" X 2"	Cross-Cut	1,600 lbs.
7.8	300-400	1/4"	Strip-Cut	1,600 lbs.
7.8CC	275-375	1/4" X 2"	Cross-Cut	1,600 lbs.



The VZ17.00 / VZM17.00: This system shreds large quantities of waste material automatically. Conveyor belt serves as a waste metering device, ensuring uninterrupted throughput with large capacity hopper for continuous feeding, system is fully integrated with simple controls, automatic reverse and restart in the unlikely case of overload, compact construction with small footprint - also suitable for mobile use, dust extractor available as an option, can be integrated with existing feed and delivery systems.



Master® V-Matic Trays

- Economical and efficient filing, ideal for smaller operations
- Three steel tilt plates provide sturdy support for forms
- Removable tilt plates adjust to change in capacity in seconds
- Heavy-gauge steel with durable powder coat finish

MODEL	ACCEPTABLE FORM SIZES	DIMENSIONS	WEIGHT
11752	6" X 9"	14 3/4" d X 6 1/2" w X 8 3/4" h	6.0 lbs.
11756	6" X 9"	14 3/4" d X 7 3/4" w X 10 3/4" h	7.2 lbs.
11764	8" X 8" to 8 1/2" X 11"	14 3/4" d X 9" w X 11 1/4" h	8.1 lbs.



Master® Expandi-Matic Tray

- Developed for use where filing space is at a premium
- Provides maximum capacity for overall length
- Convenient handles provide automatic operation
- Heavy-gauge steel with durable powder coat finish
- Extra tilt plates available

MODEL	ACCEPTABLE FORM SIZES	DIMENSIONS	WEIGHT
11531	6" X 9"	15 7/8" d X 6 3/4" w X 9 9/16" h	5.5 lbs.



Master® Card-Matic Trays

- Adjustable capacity unit for filing smaller form sizes
- Front plate tilts open and closes with slight pressure on operating handle
- Uniform pressure irons out wrinkles and curls on forms
- Rounded carrying handles and non-slip friction strips
- Heavy-gauge steel with durable powder coat finish

MODEL	ACCEPTABLE FORM SIZES	DIMENSIONS	WEIGHT
11303	6" X 9"	12 1/8" d X 6 1/2" w X 8 1/2" h	5.6 lbs.
11307	6" X 9"	14 5/8" d X 6 1/2" w X 8 1/2" h	6.1 lbs.



Keep Forms Organized With Durable Index Sets

- Each set includes A-Z, blank and 1-100 numbered inserts
- Tabs are made of metal to last longer
- Durable pressboard construction

MODEL	DIMENSIONS
14254	6" X 9"
14522	8 1/4" X 11"
14880	8" X 8"



Master® Porta-Matic Posting Tray

- Drop-side model provides full length platform to presort documents
- Simple up/down operating handle activates toggle hinge action
- Positive action rear compressor plate permits quick changes in capacity
- Full-length friction strips on tray floor prevent forms from slipping
- Heavy-gauge steel with durable powder coat finish

MODEL	ACCEPTABLE FORM SIZES	DIMENSIONS	WEIGHT
11070	8" X 8" to 8 1/2" X 11"	15" d X 9 1/8" w X 9 1/2" h	10.9 lbs.

Master® Shielded Countertop Racks



- Organizes and displays catalogs, magazines and loose-leaf materials
- Displays a large amount of catalogs in a compact space
- Shielded for one-sided viewing only, at a 30° angle
- Tongue and groove slots provide easy insertion and removal of sections
- Heavy-gauge steel construction, available Black and Gray
- Sections sold separately (see pg. 40)

MODEL	FILING CAPACITY	APPLICATION	WING TO WING LENGTH	WEIGHT
24	24"	Countertop	40"	19 lbs.
30	30"	Countertop	48"	21 lbs.
42	42"	Countertop	63"	29 lbs.
48	48"	Countertop	70"	35 lbs.

Master® Double Deck Racks

- High capacity rack - ideal for displaying a large amount of catalogs in a compact space
- Top angled at 45°, bottom angled at 39° for easy viewing
- Tongue and groove slots provide easy insertion and removal of sections
- Heavy-gauge steel construction, available in Black and Gray
- Sections sold separate (see pg. 40)



MODEL	FILING CAPACITY	APPLICATION	WING TO WING LENGTH	WEIGHT
DD36	36"	Countertop	33"	27.8 lbs.
DD60	60"	Countertop	48"	30.5 lbs.
DD84	84"	Countertop	63"	42.0 lbs.

Master® Index Sets



- Ideal for protecting and organizing materials in catalog racks
- Fly leaf Indexes - use to separate and protect large sections of materials
- Blank Index Sets - include customizable tabs that are readable from both sides
- Alphabetical Index Sets - include index tabs lettered from A to Z, visible from both sides

MODEL	DESCRIPTION	TAB	WEIGHT
B5175M	Blank Set	5th Cut	.1 lbs.
B6125M	Blank Set	6th Cut	.5 lbs.
AZ24125M	Alphabetical Set	A-Z	1.5 lbs.
B125M	Blank Set - Bulk	6th Cut	3.0 lbs.
B1755M	Blank Set - Bulk	5th Cut	3.0 lbs.



Special Shredders for Special Needs

CDs/DVDs, ZIPs, 4mm, DAT cassettes and 3.5" floppy disks contain enormous volumes of data. Portable and compact their "exposure" could have potentially devastating effects, if lost or stolen.

Special shredders are required to cut through media so they are totally illegible. The Intimus range includes some tried-and-tested efficient solutions.

intimus® MultiMedia

- Manual on/off control, via multi-function button
- LEDs for blocked, bin full and door open
- Dustproof enclosure. Mounted on rollers for flexible use
- Two large-volume catch baskets with changeable, environmentally acceptable PE-bags
- Electronics controlled by micro-controller
- Cutters made of solid, hardened steel

MODEL	SHRED CAPACITY	SHRED SIZE	CUT TYPE	WEIGHT
MultiMedia	1 media	varies	Particle-Cut	121 lbs.



intimus® 502CD

- Easily shreds CDs, credit cards and floppy disks into small particles
- Has a manual start / stop operation
- Reverse switch clears any potential jamming on the cutters
- The guard on the inlet slot can be opened as required
- 800-1200 pieces can be destroyed per hour
- Continuous running motor - maintenance free

MODEL	SHRED CAPACITY	SHRED SIZE	CUT TYPE	WEIGHT
502CD	1 CD/DVD	varies	Particle-Cut	95 lbs.

Ecologically acceptable - and ready for the future

Two collecting bins are a standard feature of the Intimus CD/MultiMedia shredders. The shredded CDs/DVDs are neatly segregated from the other materials and collected separately. This separation ensures straightforward disposal and optimally prepares the materials for appropriate recycling.



The shredder is switched on/off and reversed via a push-button. The reverse button ensures that any blockages in the cutters are immediately cleared.



Each medium is inserted individually in the appropriate feed slot and is shredded into small particles in seconds.

Reasons you need a folding machine

Vastly improve your productivity and save money in time and wasted paper. A folding machine can pay for itself in no time

- Have you ever considered how much time you or your employees take to fold letters, invoices, mailings, etc.?
- Do you regularly fold brochures or bulletins - even small quantities for small or special events?
- Is neatness or accuracy of folding important to you?
- How long does it take to manually fold 2,000 sheets of paper or more? If more than an hour, then considerable productive time is being wasted.

Chart of Common Uses:



Letter Fold

- Correspondence
- Invoices
- Special Offers
- Price Lists
- Flyers/Brochures



Half Fold

- Tabletop Displays
- Invitation Cards
- Price Lists
- Flyers/Brochures
- Greeting Cards
- Menus



Z-Fold

- Correspondence
- Invoices
- Special Offers
- Price Lists
- Flyers/Brochures



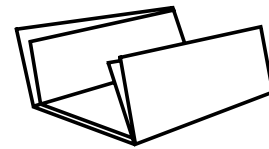
Double-Parallel Fold

- Invitation Cards
- Flyers/Brochures



Right-Angle Fold

- Letters
- Flyers/Brochures
- Greeting Cards



Baronial Fold

- Invitation Cards
- Flyers/Brochures



Martin Yale® Desktop Letter Folder

- Use for small jobs where letter folding only is required
- Hand-fed machine folds 1-3 sheets in seconds
- Creates a letter fold to fit a standard size business envelope
- Folds up to 30 letters a minute, 1,800 sheets an hour
- For use with 8 1/2" X 11" paper, 20-24 lb. bond only
- Accepts stapled sets
- Automatically folds paper when inserted
- Easy to remove unlikely paper jams
- Non-skid feet

MODEL	ELECTRICAL	DIMENSIONS	WEIGHT
P8200	120V	8"w X 16"d X 9"h	10 lbs.

Master® Catalog Racks

- Hinged for fast and easy set-up
- Desktop racks are angled at 45° for best viewing while seated
- Countertop racks are angled at 30° for best viewing while standing
- Unique tongue and groove system provides easy insertion and removal of sections
- Heavy-gauge steel construction
- Available accessories include; extension units, turntables, locking bars and index sets
- Sections sold separately (see pg. 40)

MODEL	FILING CAPACITY	APPLICATION	WING TO WING LENGTH	WEIGHT
906	6"	Desktop	18"	5.3 lbs.
912	12"	Desktop	25"	7.3 lbs.
918	18"	Desktop	33"	9.3 lbs.
6	6"	Countertop	18"	4.3 lbs.
12	12"	Countertop	25"	6.3 lbs.
18	18"	Countertop	33"	8.3 lbs.



Master® Rack Extensions

- Desktop racks are angled at 45° for best viewing while seated
- Countertop racks are angled at 30° for best viewing while standing
- Expands any Master® rack of 18" capacity or less
- Requires no tools for installation
- Folds flat for shipping or storage
- Available in 30° or 45°
- Heavy-gauge steel construction
- Sections sold separately (see pg. 40)

MODEL	COLOR	FILING CAPACITY	APPLICATION	WEIGHT
X906	Gray	6"	Desktop	2.5 lbs.
X912	Gray	12"	Desktop	4.5 lbs.
X918	Gray	18"	Desktop	6.5 lbs.
X6	Gray / Black	6"	Countertop	2.0 lbs.
X12	Gray / Black	12"	Countertop	3.8 lbs.
X18	Gray	18"	Countertop	5.5 lbs.

Master® Custom Racks

- High capacity rack - ideal for displaying a large amount of catalogs in a compact space
- Top angled at 45°, bottom angled at 39° for easy viewing
- Tongue and groove slots provide easy insertion and removal of sections
- Heavy-gauge steel construction, available with your logo and / or a custom color
- Must order in pre-set minimum quantities
- Sections sold separate (see pg. 40)



Master® Catalog Rack Sections

- Designed to securely hold catalogs and other reference materials for placement in catalog racks
- Ring sections are designed for use with punched magazines and loose-leaf materials
- Bar sections are designed for use with unpunched catalogs
- The File Adapter allows unpunched catalogs to fit into existing ring or post sections
- Sections fit easily into any Master® rack with unique tongue and groove system



MODEL	DESCRIPTION	WEIGHT
RS3	Ring Section - 1" wide	0.3 lbs.
DRS3	Ring Section - 2" wide	0.5 lbs.
MPS3	Post Section - 1" wide	0.3 lbs.
DMP3	Post Section - 2" wide	0.5 lbs.
BS	Bar Section - 1" wide	0.3 lbs.
BD	Bar Section - 2" wide	0.5 lbs.
BT-G	Bar Section - 3" wide	0.7 lbs.
ADA	File Adapter	0.2 lbs.

Master® Locking Bars

- Prevent the removal of sections from racks by unauthorized personnel
- Security measure includes all-steel bar, lock and key

MODEL	FOR USE WITH	WEIGHT
LB6	6" racks	0.4 lbs.
LB12	12" racks	0.6 lbs.
LB18	18" racks	1.0 lbs.
LBDD36	36" racks (2 required)	1.0 lbs.
LBDD60	60" racks (2 required)	1.6 lbs.



Master® Turntables

- Customizes rack for convenient viewing from any side
- Allows racks to swivel a complete 360°
- Ideal for shared information situations or for use near telephones and computers
- Fits all 6", 12" and 18" capacity catalog racks

MODEL	COLOR	FOR USE WITH	WEIGHT
T6612G	Gray	All 6" 12" and 18" capacity racks	6 lbs.
T6612B	Black	All 6" 12" and 18" capacity racks	6 lbs.



MasterView® Replacement Sleeves

- Use to replace worn sleeves or add onto your current system
- Ideal for displaying phone lists, price sheets, calendars, memos, graphs and more
- Contains 6 sleeves to display up to 12 important documents
- Sleeves hold 8 1/2" X 11" and A4 size paper
- Two-sided, non-glare and easily removable
- Use with models MVMD12, MVPD12 and MVSM10 only

MODEL	CAPACITY	DIMENSIONS	WEIGHT
MVS6	12 single sheets	9 3/4" w X 13" d X 1 1/2" h	9.2 oz.

Martin Yale® Desktop Letter/ Half Folder

- Perfect for small jobs; small businesses, churches or associations
- Easily adjusts for either letter or half fold
- Automatically folds paper when inserted
- Hand-fed, folds 1-3 sheets and accepts stapled sets
- Folds up to 36 letters a minute, 2,200 sheets an hour
- For use with 8 1/2" X 11" paper, 16-24 lb. bond only
- Easy to remove unlikely paper jams
- Non-skid feet

MODEL	ELECTRICAL	DIMENSIONS	WEIGHT
P6400	115V	14 1/4" w X 6 3/4" d X 7" h	12 lbs.



Martin Yale® RapidFold™ Desktop Automatic Folder

- Use in smaller mailrooms, offices, churches and associations
- Automatically feeds and folds a stack of documents
- Creates two different folds: letter and half folds
- Operates at a speed of up to 4,000 sheets an hour
- For use with 8 1/2" X 11" paper, 16-28 lb. bond
- Feed tray holds up to 50 sheets of paper
- Folds up to 3 sheets at a time using the manual bypass, including stapled sets
- Includes stacking tray

MODEL	ELECTRICAL	DIMENSIONS	WEIGHT
P7200	115V	14" w X 21 1/2" d X 9 1/4" h	15.5 lbs.



Martin Yale® RapidFold™ 8 1/2" X 14" Desktop AutoFolder™

- Use in mailrooms, offices, churches or associations
- Automatically feeds and folds a stack of paper up to 8 1/2" X 14"
- Creates four different fold types: letter, half, z-fold and double parallel (no letter fold with 8 1/2" X 14" paper)
- Operates at a speed of up to 4,000 sheets an hour
- Folds sheets from 3 1/2" X 5" to 8 1/2" X 14", 16-28 lb. bond
- Feed tray has a capacity of 50 sheets of paper
- Folds up to 1-3 sheets at a time using the manual bypass, including stapled sets
- Includes stacking tray
- Auto jam detect and auto shut-off

MODEL	ELECTRICAL	DIMENSIONS	WEIGHT
P7400	115V, 60Hz	20" w X 13" d X 10" h	17 lbs.





Martin Yale® AutoFolder™

- Use in large mailrooms, offices, churches, schools, businesses and associations
- Automatic folding of 8 1/2" X 11" and 8 1/2" X 14" paper
- Creates four different fold types: letter, half, z-fold and double parallel (no letter fold with 8 1/2" X 14" paper)
- Operates at a speed of up to 7,500 sheets an hour
- Handles sheet sizes from 3 1/2" X 5" to 8 3/4" X 14", 16-28 lb. bond
- Feed table capacity of 150 sheets
- Staples sets of up to 3 sheets can be folded by hand-feeding documents into the feed table bypass

MODEL	ELECTRICAL	DIMENSIONS	WEIGHT
1501X (CV7)	115V, 60Hz	24"w X 15"d X 16"h	23.3 lbs.

Martin Yale® Ease-Of-Use AutoFolder™

- Use in large mailrooms, offices, schools, churches, etc. anywhere easy to use is important
- High speed machine automatically feeds and folds a stack of documents up to 8 1/2" X 14"
- No fanning needed
- Creates five different fold types: letter, half, z-fold, double parallel, and right-angle in 8 1/2" X 11" or 8 1/2" X 14" (no letter fold with 8 1/2" X 14" paper)
- Operating speed of 9,000 sheets an hour
- Handles sheet sizes from 3 1/2" X 5" to 8 1/2" X 14", 16 lb. bond to 70 lb. index
- Feed table capacity of 150 sheets
- Stapled or unstapled sets of up to 4 sheets can be folded by hand-feeding documents into the feed table bypass
- Conveyor exit table
- Auto jam detect and auto shut-off



MODEL	ELECTRICAL	DIMENSIONS	WEIGHT
1601	115V, 60Hz	20"w X 14"d X 17"h	38 lbs.



Martin Yale® Electronic Ease-Of-Use AutoFolder™

- Use in large mailrooms, offices, schools, churches, etc. anywhere easy to use is important
- High speed machine automatically feeds and folds a stack of documents up to 8 1/2" X 14"
- Ease-of-Use electronic controls automatically sets fold plates for letter, legal and A-4 paper sizes with a total of 17 pre-set folds, with option of custom folds
- No fanning needed
- Creates six different fold types: letter, half, z-fold, double parallel, right-angle and baronial (no letter fold with 8 1/2" X 14" paper)
- Operating speed of 9,000 sheets an hour
- Handles sheet sizes from 3 1/2" X 5" to 8 3/4" X 14", 16 lb. bond to 70 lb. index
- Feed table capacity of 150 sheets
- Stapled or unstapled sets of up to 5 sheets can be folded by hand-feeding documents into the feed table bypass
- Conveyor exit table
- Auto jam detect and auto shut-off

MODEL	ELECTRICAL	DIMENSIONS	WEIGHT
1701	115V, 60Hz	20"w X 15"d X 17"h	39 lbs.

MasterView® Wall Mount System

- For use in offices, stores, factories and showrooms
- Ideal for displaying memos, price sheets, calendars, phone lists, graphs, charts and more
- Angled at 15° for a better viewing angle while standing
- Non-glare sleeves offer two-sided viewing, documents can be photocopied in the sleeve
- Includes steel base, 24 non-glare sleeves, and custom index kit
- Mounting options include double-sided tape, screws and Velcro
- Holds sheets up to 8 1/2" x 11"



MODEL	FILING CAPACITY	DIMENSIONS	WEIGHT
MVW12	24 single sheets	14"w X 13"d X 16"h	3.0 lbs.
MVF3	6 replacement sleeves	13"w X 11"d X 4"h	1.0 lbs.

MasterView® Catalog Rack Retrofit Kit

- Adapts any Master® Catalog Rack to display single sheets of 8 1/2" x 11"
- For desktop viewing of important information - including phone lists, price sheets, calendars, memos, graphs and more
- Non-glare sleeves offer two-sided viewing
- Custom indexing kit included, catalog racks sold separately
- Non-skid feet
- Heavy-gauge steel base



MODEL	FILING CAPACITY	DIMENSIONS	WEIGHT
MVRF12	24 single sheets	14"w X 14"d X 15"h	3.0 lbs.
MVF3	6 replacement sleeves	13"w X 11"d X 4"h	1.0 lbs.

Master® Starter Set Catalog Racks

- Complete system comes with everything needed to store and display catalogs
- Hinged for fast and easy set-up
- Desktop racks are angled at 45° for best viewing while seated
- Countertop racks are angled at 30° for best viewing while standing
- Unique tongue-and-groove system provides easy insertion and removal of sections
- Heavy-gauge steel construction, available in Black or Gray
- Non-skid feet
- Starter sets include a full set of 1" ring sections
- Available accessories include extension units, turntable, locking bar and index sets



MODEL	FILING CAPACITY	APPLICATION	WING TO WING LENGTH	WEIGHT
966RS3	6"	Desktop	18"	6.0 lbs.
912RS3	12"	Desktop	25"	8.0 lbs.
66RS3	6"	Countertop	18"	5.0 lbs.



MasterView® Desktop Systems

- For desktop viewing of important documents
- Ideal for displaying memos, price sheets, calendars, phone lists, graphs, charts and more
- Angled at 60° for best desktop viewing
- Non-glare sleeves offer two-sided viewing, document can be photocopied in the sleeve
- Includes steel base, complete set of non-glare sleeves, and custom index kits
- Non-skid feet
- Holds 8 1/2" x 11" sheets

MODEL	FILING CAPACITY	DIMENSIONS	WEIGHT
ML10	20 single sheets	21 1/2" w X 7" d X 15" h	2.0 lbs.
ML20	40 single sheets	27" w X 7" d X 15" h	3.0 lbs.
ML30	60 single sheets	33 1/2" w X 7" d X 15" h	5.0 lbs.
MVF3	6 replacement sleeves	13" w X 11" d X 4" h	1.0 lbs.

MasterView® Heavy-Duty Desktop System

- For desktop or countertop viewing of important information - including phone lists, price sheets, calendars, memos and more
- Compatible with all Master® Catalog Racks and accessories
- Durable system ideal for viewing your documents in a variety of desktop and countertop environments
- 24 non-glare sleeves offer two-sided viewing
- Easy to assemble, custom indexing kit included
- Non-skid feet
- Heavy-gauge steel base
- Holds 8 1/2" x 11" sheets



MODEL	FILING CAPACITY	DIMENSIONS	WEIGHT
MVR24	48 single sheets	21" w X 8" d X 14" h	8.0 lbs.
MVF3	6 replacement sleeves	13" w X 11" d X 4" h	1.0 lbs.

MasterView® Catalog and Single Sheet System

- For desktop viewing of important information - stores single sheets and bound materials up to 8 1/2" x 11"
- Ideal for displaying memos, price sheets, calendars, phone lists, magazines, brochures and catalogs
- Angled at 45° for best desktop viewing
- Holds up to 24 single sheets and 3" of catalogs
- Non-glare sleeves offer two-sided viewing, documents can be photocopied in the sleeve
- Includes steel base, 12 non-glare sleeves, three 1" catalog ring sections and custom index kit
- Non-skid feet
- Compatible with all Master® Catalog Racks and accessories



MODEL	FILING CAPACITY	DIMENSIONS	WEIGHT
MVRS3	24 single sheets 3" of catalogs	21" w X 14" d X 8" h	8.0 lbs.
MVF3	6 replacement sleeves	13" w X 11" d X 4" h	1.0 lbs.

Martin Yale® 12" x 17" AutoFolder™

- Use in copycenters, large mailrooms, offices, businesses, schools, churches, etc. anywhere high speed output is required from a tabletop folding machine
- Automatically feeds, folds and collects a stack of documents
- Simplified adjustment for folding 8 1/2" X 11", 8 1/2" X 14", and 11" X 17" documents
- Creates six different fold types: letter, half, z-fold, double parallel, right-angle and baronial
- Adjustable within a fold range of 2" to 11 1/2" on the 1st fold and 1 1/2" to 5 3/4" on the 2nd to allow for customized folds
- Feed tray holds up to 250 sheets of paper
- Operates at a speed of up to 10,300 sheets an hour
- Handles sheet sizes from 3 1/2" X 4" to 11 3/4" X 18"
- Handles paper from 16 lb. bond to 120 lb. index
- Folded material emerges on conveyor belts, creating easy-to-handle fanned stacks

MODEL	ELECTRICAL	DIMENSIONS	WEIGHT
1217A	115V, 60Hz	42" w X 17 1/2" d X 17" h	53 lbs.



Martin Yale® Heavy-Duty High-Output AutoFolder™

- Automatically feeds, folds and collects a stack of documents - also slits, scores and perforates
- Bottom feed allows for continuous reload of documents without stopping machine
- Simplified adjustments for folding 8 1/2" X 11", 8 1/2" X 14" and 11" X 17" documents
- Creates a variety of different fold types: letter, half, z-fold, double parallel, right-angle and baronial
- Adjustable within a fold range of 1 3/4" to 13" on the 1st and 2nd fold to allow for customized folds
- Operates at a variable speed of up to 18,000 sheets an hour
- Feed tray holds 250 sheets
- Handles sheet sizes from 3 1/2" X 3 1/2" to 14" X 20"
- Handles paper from 9 lb. onion skin to 110 lb. index
- Includes one 7-tooth-per-inch perforating wheel and 2 scoring wheels
- Optional 3 and 14-tooth-per-inch perforating wheels and slitting wheels also available

MODEL	ELECTRICAL	DIMENSIONS	WEIGHT
959	115V, 60Hz	43" w X 24" d X 19 1/2" h	115 lbs.

Static Eliminator & Roller Cleaner

- Roller Cleaner rejuvenates rollers for folders and bursters and eliminates roller glaze, it also helps condition rollers for better performance and longer life
- Static Eliminator dissipates static electricity to make folding and other paper processing applications worry-free

MODEL	DESCRIPTION	SIZE
200	Roller Cleaner	13 oz.
300	Static Eliminator	14 oz.





intimus® Variable Speed AutoFolder™

- Ideal for medium to large mailrooms, print shops, churches, schools, offices, etc.
- Automatically feeds, folds and collects a stack of documents
- Simplified adjustment for folding 8 1/2" X 11", 8 1/2" X 14", and 11" X 17" documents
- Creates six different fold types: letter, half, z-fold, double parallel, right-angle and baronial
- Adjustable within a fold range of 2" to 11 1/2" on the 1st fold and 1 1/2" to 5 3/4" on the 2nd to allow for customized folds
- 100% adjustable for second folding pass
- Variable speed operates at a speed from 3,000 to 10,300 sheets per hour
- Handles sheet sizes from 4" X 4" to 11 3/4" X 18"
- Handles paper from 16 lb. bond to 120 lb. index
- Folded material emerges on durable conveyor belts, creating easy-to-handle fanned stacks
- Bypass for hand feeding multiple sheets - stapled or not - and for manual second pass right-angle folding
- Large rubber rollers for consistent paper feeding and professional folds

MODEL	ELECTRICAL	DIMENSIONS	WEIGHT
2020VS	115V, 60Hz	42" w X 17 1/2" d X 17" h	53 lbs.

intimus® Heavy-Duty High-Output Air-Feed AutoFolder™

- Folds coated/gloss and two-sided documents without smearing or slipping
- Automatically feeds, folds and collects a stack of documents - also slits, scores and perforates
- Bottom feed allows for continuous reload of documents without stopping machine
- Simplified adjustment for folding 8 1/2" X 11", 8 1/2" X 14" and 11" X 17" documents
- Creates a variety of different fold types: letter, half, z-fold, double parallel, right-angle and baronial
- Adjustable within a fold range of 1 3/4" to 13" on the 1st fold and 2nd fold to allow for customized folds
- Operates at a variable speed up to 18,000 sheets an hour
- Handles sheet sizes from 3" X 3 1/4" to 14" X 18"
- Handles paper from 16 lb. bond to 85 lb. Index
- Includes one 7-tooth-per-inch perforating wheel and 2 scoring wheels
- Optional 3 and 14-tooth-per-inch perforating wheels and slitting wheels also available



MODEL	ELECTRICAL	DIMENSIONS	WEIGHT
959AF	115V, 60Hz	43" w X 24" d X 32" h	220 lbs.

MasterView® Expandable Desktop Stand

- Ideal for desktop quick reference of frequently used information
- Use to display memos, price sheets, calendars, phone lists and more
- 12 sleeves display up to 24 important documents at a time
- Sleeves hold 8 1/2" X 11" and A4 size paper
- Comes with a convenient note dispenser located at the base of stand (sticky note sampler included)
- Two-sided, non-glare and easily removable sleeves
- Index tabs included
- For replacement sleeves order MVS6 (pg. 40)
- Modular system is infinitely expandable by adding MVPD12

MODEL	FILING CAPACITY	DIMENSIONS	WEIGHT
MVMD12	24 single sheets	14 1/2" w X 12" d X 9 1/2" h	3.2 lbs.



MasterView® Expandable Wallmount/Extension Reference System

- Wallmount system is ideal for saving valuable desktop space
- Use to display calendars, phone lists, memos, price sheets and more
- 12 sleeves display up to 24 documents with a two-sided non-glare finish
- Has a convenient note dispenser located at the base (sticky note sampler included)
- Wallmount systems are infinitely expandable by adding more units
- This unit can also be used as an extension with Model MVMD12
- Index tabs included
- Comes with installation template and mounting hardware
- For replacement sleeves order MVS6 (pg. 40)

MODEL	FILING CAPACITY	DIMENSIONS	WEIGHT
MVPD12	24 single sheets	14 1/2" w X 6" d X 9 1/2" h	2.14 lbs.



MasterView® Executive Desktop Stand

- Keep important documents at your fingertips
- 10 sleeves display up to 20 documents at a time
- Sleeves hold 8 1/2" X 11" and A4 size paper
- Two-sided, non-glare and easily removable sleeves
- Fully adjustable angles for desktop and countertop viewing
- Index tabs are included
- All steel construction
- For replacement sleeves order MVS6 (pg. 40)

MODEL	FILING CAPACITY	DIMENSIONS	WEIGHT
MVSM10	20 single sheets	11.7" w X 10" d X 9 1/2" h	2.0 lbs.



Fully adjustable



Master® 40-Sheet 2-Hole Punch w/ Padded Handle

- Punches up to 40 sheets of 20 lb. bond paper
- Padded handle helps cushion hands when punching stacks
- Oversized 9/32" punch heads for easier page turning
- Adjustable paper guide ensures exact centering
- Large capacity paper chip pan
- Lock-down handle for storage and safety
- Non-skid base
- Heavy-gauge steel construction

MODEL	PUNCH PIN DIAMETER	# OF SHEETS	DIMENSIONS	WEIGHT
MP250	9/32"	40	6 3/4" w X 6 1/4" d X 6 1/8" h	1.61 lbs.

Master® 40-Sheet 2-Hole Punch w/ Lever Handle

- Lever handle provides easier punching
- Punches up to 40 sheets of 20 lb. bond paper
- Adjustable ruled paper guide ensures exact centering
- Large capacity paper chip pan
- Non-skid feet
- Heavy-gauge steel construction

MODEL	PUNCH PIN DIAMETER	# OF SHEETS	DIMENSIONS	WEIGHT
3275B	9/32"	40	5" w X 6 1/8" d X 6 7/8" h	2.6 lbs.



Replacement Punch Heads Available

MODEL	PUNCH #	HOLE DIAMETER
2525B	325B	9/32"
1025B	1325B, 1325PB	9/32"
1035B	1335B	11/32"
1040B	1340B	13/32"
3025	3020B	9/32"
5025B	5325B	9/32"
5035B	5335B	11/32"
5040B	5340B	13/32"
MP100SET	MP100	1/4"

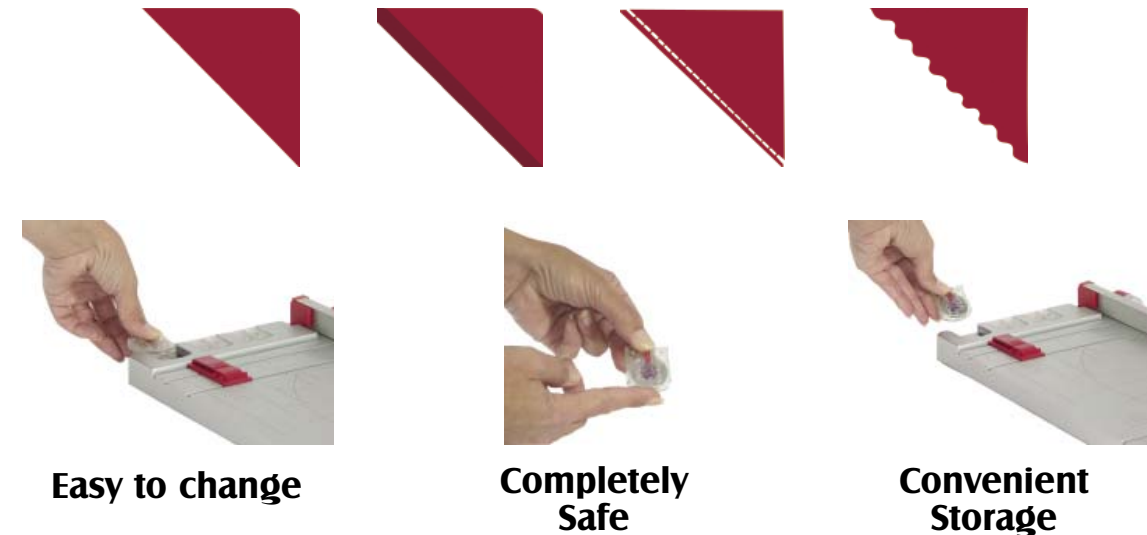
Premier® Cassette Safety-Trim™

- Safest trimmer on the market - blade is only exposed during the cutting process
- Comes with 4 blades - straight, scoring, perforating and wave cut
- Great for offices, schools, photo and craft applications
- Organizational storage slots for cassette blades
- Self locking clamp mechanism keeps paper in place
- Edge reference guide for repeated cutting accuracy
- Easy to read grid improves speed when cutting



MODEL	CUTTING LENGTH	CAPACITY	DIMENSIONS	WEIGHT
CT13	13"	5	9" w X 17" d X 3" h	3 lbs.
CT18	18"	5	9" w X 23" d X 3" h	3.5 lbs.

4 Different blades to choose from



Easy to change

Completely Safe

Convenient Storage



Premier® High-Precision Rotary Trimmers

- Accurately trims paper, coated stocks, tissue and films
- Transparent clamp-strip securely holds paper while giving a clear view of the cutting path
- Heavy-duty 3/4" thick wood base
- Self-sharpening steel blade cuts up to 10 sheets at once
- Permanent 1/2" grid with English and metric rulers ensures proper alignment
- Non-skid rubber feet

MODEL	CUTTING LENGTH	CAPACITY	DIMENSIONS	WEIGHT
318	18"	10	14 1/2" w X 21" d X 2 3/4" h	10 lbs.
330	30"	10	15 1/2" w X 33" d X 2 3/4" h	16 lbs.



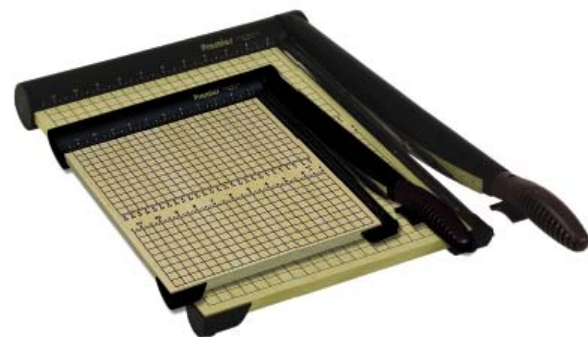
Premier® PolyBoard™ Trimmers

- Unbreakable molded base for long life
- Self-sharpening stainless steel blade cuts up to 10 sheets at once
- Permanent 1/4" grid and dual English and metric rulers ensure proper alignment
- Patented automatic blade latch locks with every cutting motion
- Finger guard protects entire blade length
- Torsion spring prevents blade from accidentally falling
- Ergonomic soft-grip handle
- Non-skid feet

MODEL	CUTTING LENGTH	CAPACITY	DIMENSIONS	WEIGHT
P212X	12"	10	12 ³ / ₈ "w X 19 ¹ / ₂ "d X 2 ¹ / ₄ "h	4 lbs.
P215X	15"	10	13 ³ / ₈ "w X 20 ¹ / ₂ "d X 2 ¹ / ₄ "h	4 lbs.
P218X	18"	10	13 ¹⁵ / ₁₆ "w X 26"d X 3"h	7 lbs.

Premier® SharpCut™ Trimmers

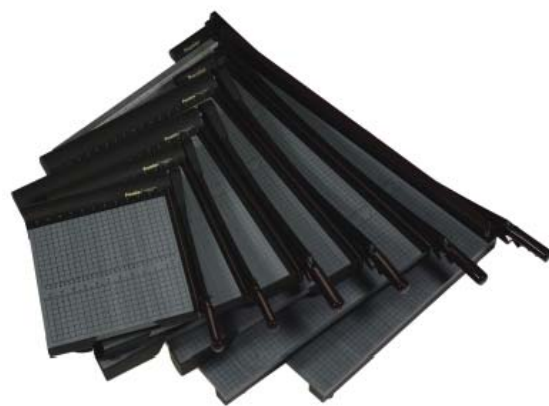
- Medium-duty 1/2" thick wood base
- Hardened self-sharpening stainless steel blade cuts up to 15 sheets at once
- Permanent 1/2" grid and dual English and metric rulers ensures proper alignment
- Patented automatic blade latch locks with every cutting motion
- Finger guard protects entire blade length
- Torsion spring prevents blade from accidentally falling
- Non-skid feet



MODEL	CUTTING LENGTH	CAPACITY	DIMENSIONS	WEIGHT
T12	12"	15	13 ¹ / ₈ "w X 19 ¹ / ₂ "d X 2"h	5 lbs.
T15	15"	15	13 ¹ / ₈ "w X 22 ³ / ₄ "d X 2"h	6 lbs.

Premier® Heavy-Duty Wood Trimmers

- Heavy-duty 3/4" thick wood base
- Fully-hardened steel blade cuts up to 20 sheets at once
- Accurately cuts paper, matte board, cardboard, film, tissue and textiles
- Permanent 1/2" grid and dual English and metric rulers ensure proper alignment
- Patented automatic blade latch locks with every cutting motion
- Finger guard protects entire blade length
- Torsion spring prevents blade from accidentally falling
- Ergonomic soft-grip handle
- Lifetime blade warranty
- Model WC36 features an automatic paper clamp



MODEL	CUTTING LENGTH	CAPACITY	DIMENSIONS	WEIGHT
W12	12"	20	13 ³ / ₄ "w X 19"d X 3 ¹ / ₄ "h	10 lbs.
W15	15"	20	14 ³ / ₄ "w X 22 ¹ / ₄ "d X 3 ¹ / ₄ "h	11 lbs.
W18	18"	20	20 ⁷ / ₈ "w X 26 ¹ / ₂ "d X 4 ¹ / ₂ "h	18 lbs.
W24	24"	20	20 ⁵ / ₈ "w X 32 ¹ / ₂ "d X 4 ³ / ₄ "h	22 lbs.
W30	30"	20	25"w X 39 ¹ / ₂ "d X 4"h	31 lbs.
WC36	36"	20	25"w X 47"d X 4"h	45 lbs.

Master® Adjustable 40-Sheet 3-Hole Punches w/ Power Handle

- Extra long power handle provides easier paper punching
- Punches up to 40 sheets of 20 lb. bond paper
- Adjustable punch heads for convenient 2 or 3-hole punching
- Accepts 2 to 7 punch heads (extra punch heads available pg. 36)
- Margin depth guides adjust for custom punching needs
- Adjustable ruled paper guide
- Large capacity paper chip pan
- Non-skid rubber feet



MODEL	PUNCH PIN DIAMETER	# OF SHEETS	DIMENSIONS	WEIGHT
1325PB	9/32"	40	11"w X 7 ¹ / ₂ "d X 11 ¹ / ₈ "h	5.6 lbs.
1335PB	11/32"	40	11"w X 7 ¹ / ₂ "d X 11 ¹ / ₈ "h	5.6 lbs.
1340PB	13/32"	40	11"w X 7 ¹ / ₂ "d X 11 ¹ / ₈ "h	5.15 lbs.

Master® 100-Sheet 3-Hole Mega-Duty Punch

- Powerfully punches up to 100 sheets of 20 lb. bond paper
- Spring-assisted mechanism and oversized handle for easier punching of stacks
- Pre-set to punch 1/4" diameter holes to fit a standard 3-ring binder
- Handle locks down for storage and safety
- Flip-up guards on each punch head ensure safe use and assist in alignment
- Adjustable paper guide
- Large capacity chip pan
- Non-skid rubber feet
- Replacement kit (Model MP100SET) includes 3 hollow punch pins and 6 cutting disks



MODEL	PUNCH PIN DIAMETER	# OF SHEETS	DIMENSIONS	WEIGHT
MP100	1/4"	100	10 ¹ / ₄ "w X 10 ¹ / ₂ "d X 9"h	7.0 lbs.

Master® Electric 2-Hole Punch

- Punches up to 10 sheets of 20 lb. paper, quickly and quietly
- Automatic on/off
- Punches standard 2-hole pattern (2³/₄" centers)
- Adjustable paper guide
- Includes reverse motor dejam mechanism
- Large capacity paper chip pan
- Comes with AC adapter or uses 6 AA batteries (not included)

MODEL	PUNCH PIN DIAMETER	# OF SHEETS	DIMENSIONS	WEIGHT
EP210	1/4"	10	4 ¹ / ₂ "w X 6 ¹ / ₈ "d X 3 ⁵ / ₈ "h	1.5 lbs.





Master® Adjustable 32-Sheet 3-Hole Punches

- Lever handle provides easier paper punching
- Punches up to 32 sheets of 20 lb. bond paper
- Adjustable punch heads for convenient 2 or 3-hole punching
- Accepts 2 to 7 punch heads (extra punch heads available pg. 36)
- Adjustable ruled paper guide ensures exact centering
- Large capacity paper chip pan
- Non-skid feet
- Heavy-gauge steel construction

MODEL	PUNCH PIN DIAMETER	# OF SHEETS	DIMENSIONS	WEIGHT
5325B	9/32"	32	11 1/8" w X 6 5/8" d X 7" h	4.6 lbs.
5335B	11/32"	32	11 1/8" w X 6 5/8" d X 7" h	3.1 lbs.
5340B	13/32"	32	11 1/8" w X 6 5/8" d X 7" h	4.6 lbs.

Master® Adjustable Medical Punch

- Ideal for use in hospital administrative offices, nurses' stations, doctor offices and other medical related areas
- Adjustable to handle 2,3,5 or 7 hole punching, for the special forms used in the medical profession
- Extra long power-handle provides easier punching
- Punches up to 40 sheets of 20 lb. bond
- Adjustable ruled paper guide ensures exact centering
- Large capacity paper chip pan
- Made from heavy-gauge steel
- Comes with 5 punch heads and accepts a total of 7



MODEL	PUNCH PIN DIAMETER	# OF SHEETS	DIMENSIONS	WEIGHT
525M	11/32"	40	11" w X 6 3/4" d X 7 1/4" h	4 lbs.

Master® Adjustable 40-Sheet 3-Hole Punch

- Lever handle provides easier paper punching
- Punches up to 40 sheets of 20 lb. bond paper
- Adjustable punch heads for convenient 2 or 3-hole punching
- Accepts 2 to 7 punch heads (extra punch heads available pg. 36)
- Margin depth guides adjust for custom punching needs
- Adjustable ruled paper guide
- Large capacity paper chip pan
- Non-skid rubber feet



MODEL	PUNCH PIN DIAMETER	# OF SHEETS	DIMENSIONS	WEIGHT
1325B	9/32"	40	11" w X 7 1/4" d X 7" h	5.8 lbs.

Premier® Execucut™ Trimmer

- Improved polymer base rigidity produces more accurate cuts
- Stable platform yields higher capacity per cut
- Base will not warp, split or deflect
- Fully hardened, self-sharpening blade
- Auto-locking handle latch
- Protected blade carry function
- Edge reference guide for repeat cutting accuracy
- Unique scoring feature allows for professional production
- Soft touch handle is comfortable for extended periods
- Hi-tech streamline appearance, compliments any office decor



MODEL	CUTTING LENGTH	CAPACITY	DIMENSIONS	WEIGHT
EX12	12"	20	12 7/8" w X 21 3/8" d X 2 3/4" h	5.3 lbs.
EX15	15"	20	14 3/4" w X 22 1/4" d X 2 3/4" h	9.2 lbs.

Premier® StakCut™ Trimmers

- Clamp securely holds stacks for accurate cutting without shifting or tearing
- Heavy-duty 3/4" thick wood base
- Fully-hardened steel blade, precision-angled to cut stacks of up to 30 sheets
- Accurately cuts paper, matte board, cardboard, film, tissue and textiles
- Permanent 1/2" grid and dual English and metric rulers ensure proper alignment
- Patented automatic blade latch locks with every cutting motion
- Finger guard protects entire blade length
- Torsion spring prevents blade from accidentally falling
- Ergonomic soft-grip handle
- Non-skid feet



MODEL	CUTTING LENGTH	CAPACITY	DIMENSIONS	WEIGHT
715	15"	30	13 7/8" w X 24 1/8" d X 3 7/8" h	16 lbs.
724	24"	30	22" w X 33" d X 5" h	26 lbs.

Trim-EZE

- Use with all paper trimmers and cutters for smoother and cleaner cuts
- Lubricates the trimmer blade, helping to reduce friction and prolong blade life

MODEL	DIMENSIONS
MRS037046	1 1/2" w X 7" d X 1 1/2" h



Martin Yale® Commercial Stack Cutter



- Tabletop cutter ideal for photo shops, schools, businesses and small print shops
- Includes all the heavy-duty features needed to cut large stacks of paper
- Cuts a stack of paper up to 12" wide and 1 1/2" thick
- Safety blade latch prevents cutting until released
- Adjustable back gauge
- Positive clamp holds stack in place, eliminating shifting and tearing
- Heavy-duty wood base
- Non-skid feet

MODEL	CUTTING LENGTH	CAPACITY	DIMENSIONS	WEIGHT
7000E	12"	375	20"w X 30"d X 16"h	45 lbs.

Master® 40-Sheet 3-Hole Punch w/ Comfort Padded Handle

- Punches up to 40 sheets of 20 lb. bond paper
- Oversized padded handle for comfortable and easy open-handed punching
- Pre-set to punch 9/32" holes to fit a standard 3-ring binder
- Handle locks down for storage and safety
- Adjustable paper guide
- Large capacity paper chip pan
- Non-skid base
- Heavy-gauge steel construction



MODEL	PUNCH PIN DIAMETER	# OF SHEETS	DIMENSIONS	WEIGHT
MP50	9/32"	40	10 3/8"w X 6"d X 6 5/8"h	2.15 lbs.

intimus® PowerLine™ Ream Cutter

- Cuts paper up to 18.7" wide
- Cuts a 3.14" stack of paper or 800 sheets of 20 lb. stock
- Has a manual blade and back gauge
- Blade to backstop is 15.5"
- Manual paper clamp
- Steel table with adjustable leveling feet included
- Accurate optical lighted cutting line



MODEL	CUTTING LENGTH	CAPACITY	DIMENSIONS	WEIGHT
620RC	18.7"	800 sheets	30 1/2"w X 31 1/2"d X 30"h	250 lbs.

Master® Adjustable 30-Sheet 2-Hole or 3-Hole Punch

- Ergonomically designed to provide easier paper punching
- Punches up to 30 sheets of 20 lb. bond paper
- Punch heads easily adjust to 11 preset positions
- Built-in paper guide
- Slide-away chip pan provides mess-free disposal of paper chips
- Non-skid feet



MODEL	PUNCH PIN DIAMETER	# OF SHEETS	DIMENSIONS	WEIGHT
3020B	9/32"	30	13 3/4"w X 47/8"d X 5 1/8"h	3.0 lbs.

**NEW
Electronics**



intimus® PowerLine™ Semi-Automatic Cutter

- Manual paper clamp allows for additional stack pressure
- Manual back gauge with analog readout
- Cutting line light for easy reference and quick set-ups
- Attachable false clamp for carbonless and other delicate papers
- Legs adjust up to 1 1/2" to facilitate leveling
- Cuts paper stacks up to 27 7/8" high
- 16" of table space in front of blade
- Keylock access prevents unauthorized use
- Dual push-button cutting controls for safe two-handed operation
- Electrical: single phase, NEMA 6-20R, 20A
- Pictured with optional side tables (PL2T)

MODEL	CUTTING LENGTH	ELECTRICAL	DIMENSIONS	WEIGHT
PL210	21"	Requires 220-240V	34 1/4"w X 47 1/2"d X 52"h	720 lbs.

Master® Adjustable 24-Sheet 3-Hole Punch

- Lever handle provides easier punching
- Punches up to 24 sheets of 20 lb. bond paper
- Adjustable punch heads for convenient 2 or 3-hole punching
- Accepts 2 to 7 punch heads (extra punch heads available pg. 36)
- Adjustable ruled paper guide ensures exact centering
- Large capacity paper chip pan
- Non-skid feet
- Heavy-gauge steel construction



MODEL	PUNCH PIN DIAMETER	# OF SHEETS	DIMENSIONS	WEIGHT
325B	9/32"	24	11"w X 7 1/4"d X 7"h	4.0 lbs.



Master® Duo™ Punch

- The original punch that requires absolutely no effort to switch from 2-hole to 3-hole
- No screwdrivers needed, no thumbscrews to mess with - no adjustment required
- One side is a dedicated 3-hole punch, while the other side is a dedicated 2-hole punch
- Lever handles punch up to 20 sheets of 20 lb. bond paper with ease
- Punches standard 9/32" 3-hole pattern and a standard 2-hole (2 3/4" centers) pattern
- Includes high-capacity chip pan
- Locking handle for convenient storage
- Patent pending

MODEL	PUNCH PIN DIAMETER	# OF SHEETS	DIMENSIONS	WEIGHT
DP20	9/32"	20	10 3/4" w X 5 3/8" d X 4 3/4" h	2.8 lbs.

Master® 20-Sheet 3-Hole Punch

- Punches up to 20 sheets of 20 lb. bond paper
- Oversized handle for easy, comfortable open-handed punching
- Pre-set to punch 9/32" diameter holes to fit a standard 3-ring binder
- Adjustable paper guide
- Handle locks down for storage and safety
- Large capacity paper chip pan
- Non-skid base
- Heavy-gauge steel construction



MODEL	PUNCH PIN DIAMETER	# OF SHEETS	DIMENSIONS	WEIGHT
MP3	9/32"	20	10 9/8" w X 6" d X 5 1/8" h	2.7 lbs.

Master® 30-Sheet 3-Hole Punch w/ Padded Handle

- Punches up to 30 sheets of 20 lb. bond paper
- Soft-touch padded handle for easier punching
- Pre-set to punch 9/32" holes to fit a standard 3-ring binder
- Handle locks down for storage and safety
- Adjustable paper guide
- Large capacity paper chip pan
- Non-skid base
- Heavy-gauge steel construction



MODEL	PUNCH PIN DIAMETER	# OF SHEETS	DIMENSIONS	WEIGHT
MP40	9/32"	30	10 1/2" w X 6" d X 5 3/4" h	2.8 lbs.

NEW Electronics

intimus® PowerLine™ Automatic Cutters

- Automatic paper clamp operation
- Manual back gauge with analog readout
- Cutting line light for easy reference and quick set-ups
- Attachable false clamp for carbonless and other delicate papers
- Legs adjust up to 1 1/2" to facilitate leveling
- Cuts paper stacks up to 27/8" high
- 16" of table space in front of blade
- Keylock access prevents unauthorized use
- Dual push-button cutting controls for safe two-handed operation
- Electrical: single phase, NEMA 6-20R, 20A
- Pictured with optional side tables (PL2T)



MODEL	CUTTING LENGTH	ELECTRICAL	DIMENSIONS	WEIGHT
PL212	21"	Requires 220-240V	34 1/4" w X 47 1/2" d X 49 1/2" h	739 lbs.
PL262	26"	Requires 220-240V	34 1/4" w X 52 1/2" d X 49 1/2" h	819 lbs.

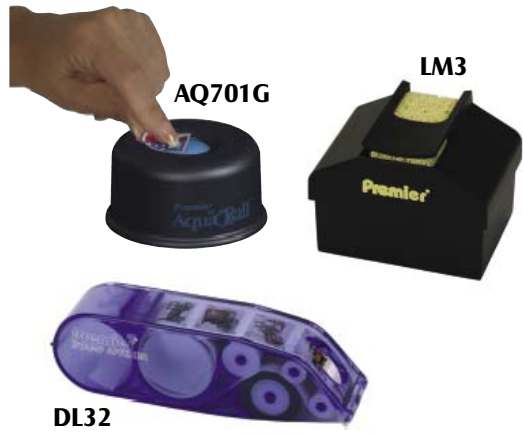
NEW Electronics

intimus® PowerLine™ Fully-Automatic Programmable Cutters

- Automatic paper clamp operation
- Programmable back gauge with auto-advance
- Cutting line light for easy reference and quick set-ups
- Attachable false clamp for carbonless and other delicate papers
- Legs adjust up to 1 1/2" to facilitate leveling
- Cuts paper stacks up to 27/8" high
- 16" of table space in front of blade
- Five easy-to-store cutting programs with up to 10 cuts in each program
- Built in diagnostics for easy service
- Digital LCD back gauge readout
- Displays instructions in English, Spanish, German, French and Italian
- Standard or metric readout
- Keylock access prevents unauthorized use
- Dual push-button cutting controls for safe two-handed operation
- Electrical: single phase, NEMA 6-20R, 20A
- Pictured with optional side tables (PL2T)



MODEL	CUTTING LENGTH	ELECTRICAL	DIMENSIONS	WEIGHT
PL215	21"	Requires 220-240V	34 1/4" w X 45" d X 49 1/2" h	755 lbs.
PL265	26"	Requires 220-240V	39 1/4" w X 50" d X 49 1/2" h	823 lbs.



Premier® Moisteners and Stamp Affixer

- The AquaBall™ model AQ701G has a floating ball over a reservoir of water, it's perfect for moistening your fingertips, stamps and envelopes
- The AquaPad™ model LM3 has a cellulose wick that pulls the water up from the bottom and stays moist for days, it has a special slot to slide envelopes through and a separate spot for fingertips and stamps
- The Stamp EZ™ model DL32 is a convenient and easy way to apply stamps to your envelopes, it's designed to take up the stamp backing to eliminate any mess

MODEL	COLOR	DIMENSIONS	WEIGHT
AQ701G	Charcoal	2 3/4" w X 3 3/4" d X 2 1/4" h	1.5 lbs.
LM3	Black	3 3/4" w X 3 3/4" d X 2 1/4" h	0.3 lbs.
DL32	Trans. Blue	1 5/8" w X 5 5/8" d X 1 3/16" h	2.6oz.

Martin Yale® Express Labeler/Tabber

- One machine labels or tabs media at a speed of up to 7,500 pieces per hour
- Handles pieces 4" to 15" wide and 3" to 15" long
- Accommodates pin fed tabs 7/8" to 15/16" diameter
- User friendly controls with LCD display of sequential prompt to assist in set-up
- Built-in batch counter
- Uses pin-fed tabs and labels only
- Built-in diagnostics for easy service

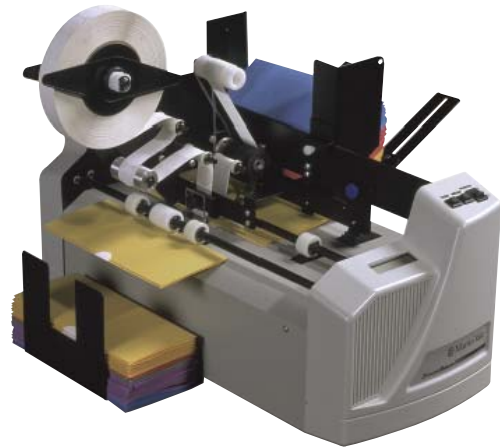
MODEL	ELECTRICAL	DIMENSIONS	WEIGHT
EX5000	115V, 60Hz	20" w X 21" d X 17" h	40.0 lbs.



Martin Yale® Express Tabber

- Seals mail pieces with an adhesive tab to create mailings that comply with U.S. postal requirements
- Reduces cost of mailings by eliminating the need for envelopes
- Accepts rolls of up to 5,000 tabs
- Precision control of tab location
- Handles media 5" to 12" wide and up to 1/8" thick
- Process media at up to 7,500 pieces per hour
- Accepts 15/16" and 31/32" round and 7/8" square tabs with either friction or tractor fed backing
- Built-in diagnostics for easy service
- Not recommended for use with clear tabs

MODEL	ELECTRICAL	DIMENSIONS	WEIGHT
EX5100	115V, 60Hz	20" w X 21" d X 17" h	40.0 lbs.



Master® 10-Sheet 3-Hole Punch

- Punches up to 10 sheets of 20 lb. bond paper
- Oversized 9/32" punch heads for easier page turning
- Removable paper chip pan eliminates mess
- Heavy-gauge steel construction

MODEL	PUNCH PIN DIAMETER	# OF SHEETS	DIMENSIONS	WEIGHT
30FB	9/32"	10	11 3/8" w X 2 1/4" d X 2" h	1.7 lbs.



Master® 3-Hole Battery Operated Desktop Punch

- Punches 10 sheets of 20 lb. paper consistently without jamming
- Designed for easy use and hand held operation if desired
- Enough power to last more than one year of average use
- Easy to use button on top - just push and punch effortlessly
- 9/32" holes for easy page turning with less tearing
- Adjustable paper guide built in base, also has a large chip holder
- Operates with 6 AA batteries (not included) or 120 volt power transformer (provided)

MODEL	PUNCH PIN DIAMETER	# OF SHEETS	DIMENSIONS	WEIGHT
EP312	9/32"	10	11 3/8" w X 3 3/4" d X 2 1/8" h	2.2 lbs.



Master® Duo™ Electric Punch

- Compact design for desktop storage
- Same machine will punch 2-hole or 3-hole - no adjustment needed
- Capacity of 12 sheets - either 2 or 3 holes
- One side is a dedicated 2-hole punch, while the other side is a dedicated 3-hole punch
- 3,000 punch battery life
- Operates with 6 AA batteries (not included) or 120 volt power transformer (provided)

MODEL	PUNCH PIN DIAMETER	# OF SHEETS	DIMENSIONS	WEIGHT
EP323	9/32"	12	10 1/4" w X 5 1/2" d X 3 1/8" h	3 lbs.



intimus® Tabletop Burster



- Burst up to 5-part carbonless, 3-part carbon interleaved, continuous feed documents and forms
- Slits and bursts single-ply forms
- Adjustable margin slitters are self-sharpening high-carbon, steel and adjust from 1/2" to 3/4" trim for a single ply document
- Chemical resistant burster rollers
- Handles forms 5 1/2" to 17" wide and 3" to 12" long
- Forms are processed at speeds up to 6,100 8 1/2" forms per hour or 15,000 3 1/2" checks per hour

MODEL	ELECTRICAL	DIMENSIONS	WEIGHT
970A	115V, 60Hz	33"w X 20"d X 9"h	76.0 lbs.

intimus® Score and Perf Machine

- A great companion for any print operation, providing stand alone score/perf capability
- Creates tent style business cards, occasion cards and/or tickets
- Score or perforate sheets from 24 lb. bond to 110 lb. tag stock
- Fully adjustable paper guides to accommodate 3 3/4" to 12" wide sheets
- Adjustable score/perf hubs make for easy set-up
- Additional perf, score, slit wheels available



MODEL	PERFORATING	SLITTING	SCORING	DIMENSIONS	WEIGHT
SP100	One 14-tooth/in.	None	One	8"w X 15" d X 6" h	23.0 lbs.

intimus® AutoPerf™ Forms Cutter/Perforator



- Ideal for scoring and perforating brochures, checks, coupons, tickets and computer generated forms
- Variable speed handles up to 15,800 8 1/2" X 11" sheets per hour
- Bottom feeding allows for continuous processing
- Handles paper weights from 16 lb. bond to 150 lb. cardstock
- Depth control adjustment to compensate for varying paper thickness
- Handles paper widths from 3 7/8" to 18" and paper lengths from 3 1/2" to 22"
- Optional 3,7 and 10-tooth/in. perforating, slitting and scoring wheels available to enhance product flexibility

MODEL	PERFORATING	SLITTING	SCORING	DIMENSIONS	WEIGHT
3800AP	One 10-tooth/in.	None	Two	36"w X 27 1/2" d X 13 1/4" h	85.0 lbs.
3800FC	Two 7-tooth/in.	One	None	36"w X 27 1/2" d X 13 1/4" h	85.0 lbs.

Martin Yale® Letter Openers



Martin Yale letter openers save time, money and improve efficiency in an office. Open stacks of letters in a few minutes rather than hours. Utilize your time doing other tasks while your letter opener does its job. From our semi-automatic openers to our top of the line automatic feed and open models, the Martin Yale® letter openers will pay for themselves in no time at all.

Martin Yale® Portable, Hand-Held Letter Opener

- Lightweight machine opens an envelope in seconds
- Ideal for the home office and mobile office
- Automatically activates when envelope is inserted
- Blades are fully enclosed to protect fingers
- Ergonomically designed to conform to the hand
- Requires four AA batteries (not included)



MODEL	ELECTRICAL	DIMENSIONS	WEIGHT
1624	Battery Operated	5 1/4" w X 2 3/8" d X 1 3/4" h	4.6 oz.

Martin Yale® Electric Desktop Letter Opener



- Ideal for small to mid-size businesses
- Automatically opens envelopes when inserted - easy one-hand operation
- Accepts standard-size business envelopes
- Blades are fully enclosed to protect fingers
- Non-skid rubber suction feet keep machine in place
- Low noise operation

MODEL	ELECTRICAL	DIMENSIONS	WEIGHT
1616	110V	7 1/8" w X 9 1/2" d X 4" h	3.8 lbs.

Martin Yale® Automatic Letter Opener



- Ideal for mid-size to large businesses
- Automatically feeds and opens a stack of envelopes
- Hands-free operation, just put envelopes into position and turn on
- Accepts a 1 3/4" tall stack of envelopes
- Accepts standard-size business envelopes
- Operates at a speed of up to 7,000 envelopes/hour
- Blades are fully enclosed to protect fingers
- Catch tray folds for easy storage
- Non-skid feet

MODEL	ELECTRICAL	DIMENSIONS	WEIGHT
1632	110V	6" w X 10 1/2" d X 14" h	11.0 lbs.

Martin Yale® "No Scrap" Automatic Letter Opener

- Ideal for large businesses and mailrooms
- High-speed machine cuts only one side of envelope, leaving no scrap
- Automatically feeds and opens a stack of envelopes up to 3" thick
- Operates at a speed of up to 12,000 envelopes/hour
- Opens envelopes up to 1/4" thick
- Non-skid feet
- Catch tray folds and can be stored in back of base unit



MODEL	ELECTRICAL	DIMENSIONS	WEIGHT
1648	110V	17" w X 10" d X 9" h	18 lbs.

Martin Yale® High-Speed Letter Opener



- Ideal for large businesses and mailrooms
- For high-speed processing of large mail volumes
- Automatically feeds, opens and collects a stack of envelopes
- Operates at a speed of up to 17,500 envelopes/hour
- Opens envelopes up to 1/4" thick
- Accepts a 6" tall stack of envelopes
- Adjustable width to accommodate different envelope sizes and types
- Comes with removable receiving tray

MODEL	ELECTRICAL	DIMENSIONS	WEIGHT
62001	115V, 60Hz	36" w X 10 3/8" d X 12 5/8" h	41 lbs.

Martin Yale® Tabletop Jogger

- Helps eliminate static electricity and paper sticking for easier processing
- Great companion for high speed copiers, folding machines, printing presses, cutters and binding systems
- Takes up little space in your workspace
- Jogs 1 ream of 8 1/2" X 11" or 1/2 ream of 8 1/2" X 14" paper

MODEL	ELECTRICAL	DIMENSIONS	WEIGHT
400	115V, 60Hz	15 1/4" w X 11 1/4" d X 15 1/4" h	23.0 lbs.



intimus® Heavy-Duty Bench Jogger

- Helps eliminate static electricity and paper sticking for easier processing
- Great companion for high speed copiers, folding machines, printing presses, cutters and perforators
- Heavy-gauge steel construction holds sheets up to 17" X 22" X 3"
- Variable speed control

MODEL	ELECTRICAL	DIMENSIONS	WEIGHT
4200	115V, 60Hz	26 1/4" w X 17 1/2" d X 28 3/8" h	45.0 lbs.

intimus® Continuous Form Signer

- Locking security system with single key access
- Signs continuous form checks and documents from 5 1/2" to 16 1/2" wide and either 3 1/2" or 7" long
- Handles up to 240 documents per minute
- Handles paper weights from 14 lb. to 125 lb.
- Easy to use registration system
- Batch counter
- Last form shut-off
- Includes black ink roller, optional tri-color ink roller also available
- Signature plates are required for operation of this machine and must be ordered separately

MODEL	ELECTRICAL	DIMENSIONS	WEIGHT
930A	110V/120V, 50/60Hz	23" w X 7 5/8" d X 12 5/8" h	35.0 lbs.





intimus® Padding Presses

- Simple operation makes it easy to handle most small padding jobs
- Ideal for padding carbonless forms, note pads and scratch pads
- Sturdy metal construction
- Wing screws tighten by hand - no tools necessary
- J1811 - capacity is 5³/₄" high and 17³/₄" wide
- J1824 - capacity is 19³/₄" high and 17³/₄" wide

MODEL	DIMENSIONS	WEIGHT
J1811	19" w X 11" d X 13" h	18.0 lbs.
J1824	19" w X 24" d X 13" h	26.0 lbs.

Hollo Drill Bits

These superior grade bits, standard or ordered with the exclusive Diamonizing Process, provide clean, smooth drilling. Hollow drill bits resist chipping, twisting and clogging. Chromium, vanadium and molybdenum combine to create long-lasting and dependable tools. Seven styles are available in vertical capacities from 1" to 2¹/₂" and 12 hole sizes from 1/8" to 1/2" diameter. The optical Diamonizing Process impregnates the steel with tungsten carbide to make the bit 90% the hardness of diamond. The resulting bit lasts up to four times as long.



Style A	Style B	Style C	Style D	Style J	Style K
Casco	Lawson	Seybold	Nygren	Chandler and Price	Martin Yale
Challenge	Seybold	HFA	Dahly	Pioneer	Martin Yale
Climax	Wright				
Ottawa	Rosback				

Millimeters	3.18	3.97	4.77	5.56	6.35	7.14	7.94	8.73	9.53	10.32	11.12	12.70
Inches	1/8"	5/32"	3/16"	7/32"	1/4"	9/32"	5/16"	11/32"	3/8"	13/32"	7/16"	1/2"
Vert. Cap	1"	1 1/8"	1 1/2"	2"	2 1/4"	2 1/4"	2 1/4"	2 1/4"	2 1/4"	2 1/4"	2 1/4"	2 1/4"

Style A Drills in 1/4", 5/16" and 3/8" Diameters are available in Extra Long (2 1/8") capacity.



Martin Yale® 2" Electric Paper Drill

- Bores through a stack of paper up to 2" thick
- Easy-dial, Auto-stop provides instant selection of five preset drilling positions
- Customize drilling needs anywhere on sheets up to 14" wide
- 1/4" diameter K-style hollow drill bit is included
- Comes with sharpener
- Other diameter drill bits and drill strips available
- Accommodates drill bits up to 1/2"

MODEL	ELECTRICAL	DIMENSIONS	WEIGHT
202	115V, 60Hz	20" w X 18" d X 25" h	61.0 lbs.

Martin Yale® 1" Electric Drill

- Bores through a stack of paper up to 1" thick
- Easy-dial, Auto-stop provides instant selection of five preset drilling positions
- 1/4" diameter J-style hollow drill bit is included
- Comes with sharpener
- Other diameter drill bits and drill strips available
- Accommodates drill bits up to 9/32"

MODEL	ELECTRICAL	DIMENSIONS	WEIGHT
101	115V, 60Hz	20" w X 14" d X 12" h	31.0 lbs.



Martin Yale® CD Insert Slitter

- Easily converts 8 1/2" X 11" sheets to two CD jewel case inserts that are cut to fit and perforated along the two side folds
- Cutting blades are semi-self sharpening
- Adjustable paper guides
- Cuts and perfs up to 4,200 inserts per hour
- Cuts and perfs 24 lb. bond or equivalent stock
- Continuous feeding of stacks up to 5/8" thick

MODEL	SPEED	DIMENSIONS	WEIGHT
CDS200	70/min.	10 1/2" w X 15" d X 6" h	35.0 lbs.



Martin Yale® High-Capacity Business Card Slitters

- Easily convert 8 1/2" X 11" sheets to finished 2" X 3 1/2" business cards with a simple two-pass operation
- The BCS210 is a 10-up machine that cuts 8 1/2" X 11" sheets into two strips of 3 1/2" X 11" on the first pass and finishes the job by taking the 5-up sheets and cutting them down to 2" X 3 1/2" cards
- The BCS212 is a 12-up machine that cuts 8 1/2" X 11" sheets into three strips of 3 1/2" X 8 1/2" on the first pass and finishes the job by taking the 4-up sheets and cutting them down to 2" X 3 1/2" cards
- For jobs that are printed in 4-up format on 3 1/2" X 8 1/2" sheets, the BCS212 handles the conversion to 2" X 3 1/2" cards in one easy pass
- Cutting blades are self sharpening to allow for years of operation without sharpening or replacement
- Adjustable paper guides
- Up to 375 cards/minute
- Continuous feeding of stacks up to 5/8" thick

MODEL	SPEED	DIMENSIONS	WEIGHT
BCS210	300/min.	14 1/8" w X 15" d X 10 3/8" h	35.0 lbs.
BCS212	375/min.	14 1/8" w X 15" d X 10 3/8" h	35.0 lbs.



intimus® High-Capacity Business Card Slitters w/ Score and Perf

- Easily convert 8 1/2" X 11" sheets to finished 2" X 3 1/2" business cards with a simple two-pass operation
- Offers an extra work station for scoring and perforating
- The score and perforation station is ideal for creating tent style business cards, occasion cards or tickets
- The BCS410 is a 10-up machine that cuts 8 1/2" X 11" sheets into two strips of 3 1/2" X 11" on the first pass and finishes the job by taking the 5-up sheets and cutting them down to 2" X 3 1/2" cards
- The BCS412 is a 12-up machine that cuts 8 1/2" X 11" sheets into three strips of 3 1/2" X 8 1/2" on the first pass and finishes the job by taking the 4-up sheets and cutting them down to 2" X 3 1/2" cards
- For jobs that are printed in 4-up format on 3 1/2" X 8 1/2" sheets, the BCS412 handles the conversion to 2" X 3 1/2" cards in one easy pass
- Cutting blades are self sharpening to allow for years of operation without sharpening or replacement
- Adjustable paper guides allow for easy set-up for customized needs
- Up to 375 cards/minute
- Continuous feeding of stacks up to 5/8" thick



MODEL	SPEED	DIMENSIONS	WEIGHT
BCS410	300/min.	13"w X 15"d X 6"h	44.0 lbs.
BCS412	375/min.	13"w X 15"d X 6"h	44.0 lbs.

intimus® Gutter-Cut Business Card Slitter

- Quickly and professionally produce business cards with full bleed
- 8-up format business card slitter with extra large waste receptacle
- Fits securely on custom waste bin for ease-of-use, maximizing run time and no-mess production
- Easily converts 8 1/2" X 11" sheets to finished 2" x 3 1/2" business cards with a simple two pass operation - either full bleed or regular
- Cutting blades are hardened steel self sharpening for years of operation without sharpening or replacement
- Adjustable paper guides allow for easy set-up for customized needs
- Continuous feeding of stacks up to 5/8" thick
- Rear cover panel strips waste away from rollers - self-cleaning
- For maximum safety the machine will not run if rear cover is not in place
- Handles paper thickness up to 100 lb. linen stock



MODEL	SPEED	DIMENSIONS	WEIGHT
GC208	300/min.	17"w X 10 5/8"d X 28 1/4"h	70 lbs.

Martin Yale® V-Tray

- Ideal for temporary storage of collated documents
- Made with heavy-gauge steel construction

MODEL	DIMENSIONS	WEIGHT
61190	12 1/2"w X 11 1/2"d X 8"h	2.8 lbs.



Martin Yale® 6-Station Collator

- The quick and easy way to collate
- Simply pull the lever handle to create collated sets of up to 6 sheets
- Each bin holds up to 100 letter, legal or A4 size sheets
- Requires no set-up, adjustment or electricity
- Not recommended for collating existing multi-part forms or stapled sets

MODEL	DIMENSIONS	WEIGHT
CL6	9 1/4"w X 11 1/4"d X 12 3/4"h	4.6 lbs.

Martin Yale® 12-Station Electric Collator

- Assembles 240 sheets per minute at 12 pages per cycle and 20 cycles per minute
- 12 bins hold up to 174 sheets each
- Handles sheet sizes of 8 1/2" X 11" to 8 1/2" X 14"
- Accommodates paper weights from 13 lb. to 110 lb. (non glossy)
- Continuous feed or foot pedal control

MODEL	ELECTRICAL	DIMENSIONS	WEIGHT
61201	115V, 60Hz	21 3/4"w X 14 5/8"d X 15 3/8"h	54 lbs.



intimus® StackWagons™

- Conveniently transfers volumes of paper in mailrooms, offices, print shops, copy shops, schools, hospitals, etc.
- Center slope design ensures that paper rests against the inner stacking walls
- Heavy-gauge steel construction
- Some assembly required

MODEL	DIMENSIONS	WEIGHT	MAX. SHEET SIZE
500	20"w X 20"d X 44"h	71.0 lbs.	8 1/4" X 11"
501	20"w X 32"d X 44"h	91.0 lbs.	11" X 11"